

**Board of Directors**

Steven A. Fangmann, P.E., BCEE  
*President & Chairman*

Robert L. Raab, P.E., BCEE, CCM  
*Senior Vice President*

William D. Merklin, P.E.  
*Senior Vice President*

July 8, 2021

New York American Water – Merrick Operations District  
PWS ID No. NY2902840  
MCL Deferral for 1,4-dioxane  
Quarterly Report – Second Quarter 2021

**Introduction**

On behalf of New York American Water (NYAW), D&B Engineers and Architects (D&B) has prepared this document in accordance with the requirements of the New York State Department of Health (NYSDOH) for public water suppliers who have been granted deferrals from maximum contaminant level (MCL) violations for 1,4-dioxane. NYAW's Merrick Operations District was granted an MCL deferral for 1,4-dioxane in 2020. NYAW was granted a deferral due to its proactive efforts toward the implementation of treatment for this compound.

The enclosed is a report describing NYAW's progress towards maintaining the highest quality of water for our customers in the Merrick Operations District, and meeting the deadlines set forth in the deferral approval. The schedule for the project is contained in **Attachment A**.

**Corrective Action Plan Milestones**

Advanced Oxidation Treatment (“AOP”) System for Seamans Neck Road Wells 3A and 4

Pilot testing to prove the efficacy of the AOP/UV treatment process was completed in the fourth quarter of 2020. Following completion of the pilot test, the Basis of Design Report (BODR) was completed and submitted by NYAW to the Nassau County Department of Health (NCDOH) and NYSDOH in the first quarter of 2021.

Following the NCDOH and NYSDOH review and approval of the BODR, NYAW will submit the Design Plans to the respective Departments of Health for review and approval. Design Plans are in development and are scheduled to be submitted by early Fall 2021.

NYAW received Zoning Approval from the Town of Hempstead Board of Appeals for the project in February of 2021. NYAW is currently working with the Town of Hempstead Building department to secure the Building Permit based on the Zoning Approval.

In accordance with the approved Deferral Schedule, construction is scheduled to commence early 2022 upon receipt of the Building Permit from the Town of Hempstead and approval of Design Plans from the Health Departments. NYAW is currently working on development of the detailed

New York American Water – Merrick Operations District  
 PWS ID No. NY2902840  
 MCL Deferral for 1,4-dioxane  
 Quarterly Report – Second Quarter 2021  
 July 8, 2021

design plans and anticipates completion and submission for regulatory review by the third quarter of 2021.

### Public Notification

Public notification regarding the presence and regulation of emerging compounds, as well as the deferral, was included in NYAW's 2020 annual Water Quality Report/Consumer Confidence Report released in June. The report was posted on NYAW's website and publicized via newspaper ads and bill insert. The report specific to the Merrick Operations District is available at <https://www.amwater.com/ccr/merrick.pdf>. In addition, NYAW has uploaded this quarterly report to its website at <https://www.amwater.com/nyaw/water-quality/Emerging-Compounds/seamans-neck>. Documentation of public notification is contained in **Attachment B**.

### Analytical Sampling

Sample results for the wells for which deferrals were granted (Seaman's Neck Wells 3A and 4) taken during the second quarter of 2021 are contained in the table below. Jefferson St. Well 11 is also included as 1,4- dioxane levels were reported in NYAW's Q1 report at 1.0 ug/L. As shown below, resampling of Well 11 on 4/4/2021 yielded results of 0.021 ug/L. NYAW will continue to report on 1,4-dioxane concentrations detected in Well 11. Full laboratory reports for each sample are contained in **Attachment C**.

Q2 2021 1,4-dioxane water quality monitoring results (ug/l or ppb)

<b>Merrick OPS District (PWS# NY 2902840)</b>				
<b>Location</b>	<b>Well ID #</b>	<b>Date Sampled</b>	<b>Lab Utilized</b>	<b>1-4, Dioxane (ug/L)</b>
Seaman Neck Well 4	N-09338	4/15/2021	Pace	<b>1.60</b>
Seaman Neck Well 3A	N-14347	5/07/2021	Pace	<b>2.0</b>
Seaman Neck Well 4	N-09338	3/18/2021	Pace	<b>1.6</b>
Seaman Neck Well 3A	N-14347	3/04/2021	Pace	<b>1.70</b>
Jefferson St. Well 11	N-07407	4/07/2021	Pace	<b>0.021</b>

New York American Water – Merrick Operations District  
PWS ID No. NY2902840  
MCL Deferral for 1,4-dioxane  
Quarterly Report – Second Quarter 2021  
July 8, 2021

**Conclusion**

As demonstrated above, NYAW is actively working to preserve the quality of water for its customers and comply with the requirements put forth by the NYSDOH. NYAW looks forward to continuing to work towards completion of its treatment facilities for the Merrick Operations District.

Should you have any questions, please feel free to contact me at (516) 364-9890, Ext. 3401.

Very truly yours,



Philip Sachs, P.E.  
Vice President

PRSt/kb  
attachments

cc: K. Wheeler (NYSDOH)  
B. Rogers (NYSDOH)  
W. Provoncha (NCDH)  
P. Young (NCDH)  
R. Putnam (NCDH)  
L. DiMenna (NYAW)  
J. Kilpatrick (NYAW)  
G. Sachs (NYAW)

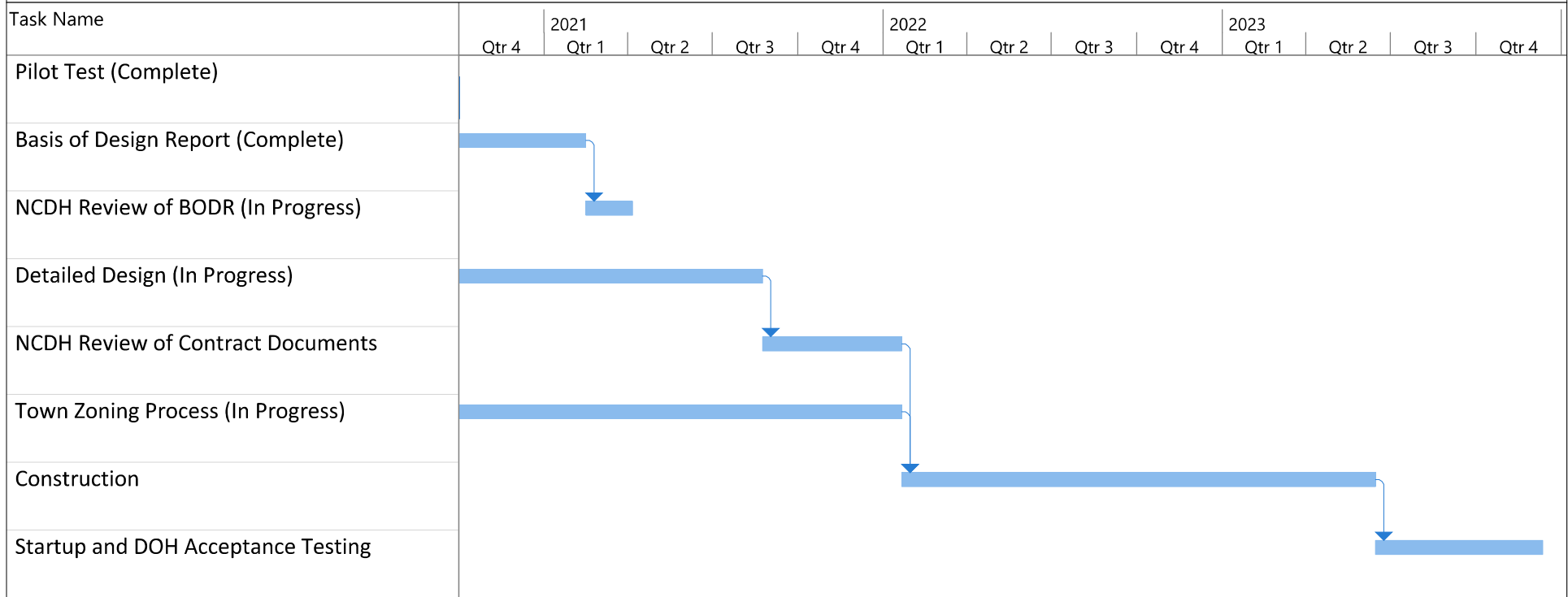
◆5479\KK07082102

**ATTACHMENT A**

**MCL Deferral Project Schedule**

New York American Water  
 Merrick Operations District  
 MCL Deferral - Quarterly Report

Seamans Neck Road  
 Wells 3A and 4  
 AOP Project Schedule



**ATTACHMENT B**

**Public Notification Documentation**



# 2020 WATER QUALITY REPORT



**Service Area 2–South Shore:  
Merrick Operations District**  
Public Water Supply ID# NY2902840

This report complies with Part 5-1.72, New York State Sanitary Code (10 NYCRR) and federal Consumer Confidence Report regulations (40 CFR Part 141, Subpart O).

Este informe contiene información muy importante sobre su agua beber. Tradúzcalo ó hable con alguien que lo entienda bien.

本报告与您的饮用水有关。  
如果您不了解其内容，应请别人为您翻译解说。

이 보고서에는 귀하께서 사용하고 계시는 식수에 관한 정보가 들어있습니다. 만약에 이해를 못하시면 누군가에게 번역을 의뢰하십시오.

## A Message from the New York American Water President



To Our Valued Customer:

Thank you for the opportunity to serve you. I am pleased to share our **Annual Water Quality Report** with you – this is our report card on the quality of the drinking water delivered to our customers. The report shows that we continue to supply you with water that

meets or surpasses all county, state, and federal water quality standards. We encourage our customers to review this report as it provides important details about the source and quality of your drinking water between January and December 2020.

New York American Water (NYAW) invests in our infrastructure to deliver quality drinking water to our customers. This includes the facilities and technology needed to draw water from the source and treat it, along with miles and miles of pipeline hidden below the ground to bring water to your tap. In addition, our plant operators, water quality experts, engineers and maintenance crews work around the clock to provide you with quality water.

Delivering safe, reliable water service requires significant investment to maintain and upgrade aging facilities. **In 2020, we invested approximately \$62 million in system improvements.** NYAW is also making important investments in water treatment technology to comply with New York State Department of Health’s (NYSDOH) new drinking water standards for emerging compounds, specifically 1,4-Dioxane, PFOA, and PFOS.

The COVID-19 public health emergency highlighted how essential water is for public health. We remain steadfast in our commitment to delivering safe and reliable water service while maintaining a safe environment for our employees and customers. NYAW extends our sincerest gratitude to our field employees as well as all frontline workers and essential employees who are on the job and keeping life flowing. Thank you!

Sincerely,

Lynda DiMenna  
President, New York American Water

## Public Participation – How You Can Get Involved

Customers can participate in decisions that may affect the quality of water by:

- Reading the information provided in bill inserts and special mailings
- Contacting the company directly with questions or to discuss issues
- Attending open houses conducted by the company
- Responding to survey requests
- Attending presentations by the company made to local community and civic associations
- Contacting agencies such as the Nassau County Health Department (NCDOH) at 516-227-9692



## Be Water Smart – Think Conservation

The New York State Department of Environmental Conservation requested that all Long Island water suppliers reduce their peak pumpage by 15 percent to protect the long-term sustainability of the Long Island aquifer. Our customers must conserve water to help us achieve this goal. When our customers conserve, not only do they reduce their water bill, but NYAW is able to defer infrastructure investment projects that are needed to meet peak water demand, which can reach as high as 50 million gallons of water a day in the summer.

The following suggestions will help you make your home “water efficient” without sacrificing comfort or changing lifestyles:

- Install smart irrigation technology on your irrigation system to irrigate as efficiently as possible.
- Install a moisture sensor on your irrigation system to prevent wasteful watering during or just after a rain.
- Use native, drought-resistant shrubs, trees, plants, and grasses in your landscape.
- Run dishwashers and washing machines only with full loads.
- Turn off the tap when brushing your teeth or shaving.
- Check every faucet for leaks. Even a slow drip can waste 15 to 20 gallons a day, or about 6,000 gallons a year.
- If you suspect that you have a water leak, order our free Leak Detection Kit. The kit contains information, and dye tablets to help you determine if you have a wasteful water loss. Call our customer call center or 516-632-2244 to order.
- Replace older devices with water-saving showerheads, faucets, or low flush toilets. A normal showerhead uses 5 to 7 gallons a minute. Switching to a low-flow model that uses 1.5 gallons a minute can save a family thousands of gallons of water a year.

## What is a Water Quality Report?

To assure that water is safe to drink, the U.S. Environmental Protection Agency (USEPA), and the Health Departments of New York State and Nassau County, set regulations for water quality and indicate the levels of various substances that are acceptable in public drinking water. This report explains how our water measures up to those standards. As you can see by the results, our water quality is excellent.

The NYSDOH) and the U.S. Food & Drug Administration regulate and set limits for substances in bottled water, which must also provide protection for public health.

During 2020, our system was in compliance with applicable NYS drinking water operating, monitoring and reporting requirements. If you have questions about this report, please contact our Water Quality Manager at 516-632-2239.

## Share This Report:

Landlords, businesses, schools, hospitals, and others are encouraged to share this important water quality information with water users at their location who are not direct customers of NYAW. Additional copies of this report are available by contacting us at 516-632-2239.

## How to Contact Us

Thank you for allowing us to continue to provide your family with quality drinking water this year. We ask that all our customers protect our water sources, which are the heart of our community. Please call our Customer Call Center toll-free if you have questions:

### **NYAW:**

**Customer Call Center:** 1-877-426-6999 (M-F; 7am-7pm)

**Emergencies:** 1-877-426-6909 (24 hours)

**TDD (Hearing/Speech impaired):** 1-800-300-6202

Online: [www.newyorkamwater.com](http://www.newyorkamwater.com)

### **Merrick Administrative Office:**

New York American Water

60 Brooklyn Avenue, Merrick, NY 11566

516-632-2232

### **Billing Payment Address:**

New York American Water

PO BOX 371332

Pittsburgh, PA 15250-7332

## Water Information Sources :

### **NYSDOH**

1-518-473-8600 • [www.health.state.ny.us](http://www.health.state.ny.us)

### **NCDOH**

516-227-9692 • [www.co.nassau.ny.us/health](http://www.co.nassau.ny.us/health)

### **New York State Department of Public Service**

1-800-342-3377 • [www.dps.state.ny.us](http://www.dps.state.ny.us)

### **USEPA**

[www.epa.gov/safewater](http://www.epa.gov/safewater)

### **EPA Safe Drinking Water Hotline**

1-800-426-4791

### **American Water Works Association**

[www.awwa.org](http://www.awwa.org)

### **Water Quality Association**

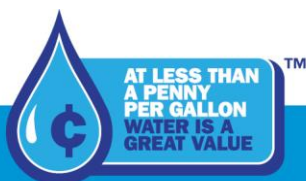
[www.wqa.org](http://www.wqa.org)

## About NYAW

NYAW, a subsidiary of American Water (NYSE: AWK), is the largest investor-owned water company in New York, providing high-quality and reliable water and/or wastewater services to approximately 350,000 people.

## About American Water

With a history dating back to 1886, American Water is the largest and most geographically diverse U.S. publicly traded water and wastewater utility company. The company employs more than 6,800 dedicated professionals who provide regulated and market-based drinking water,





wastewater, and other related services to more than 14 million people in 46 states. American Water provides safe, clean, affordable, and reliable water services to our customers to make sure we keep their lives flowing. For more information, visit [amwater.com](http://amwater.com) and follow American Water on [Twitter](#), [Facebook](#) and [LinkedIn](#).

**If you have a private well which is unregulated and untested, you should not use the water for drinking or cooking.**  
(Source: NCDOH)

## Communities Served

Bellmore  
East Massapequa\*  
Levittown\*  
Massapequa\*  
Merrick  
North Bellmore  
North Merrick  
North Seaford  
North Wantagh  
Seaford  
Wantagh

\*community partially served

## Average Residential Usage & Cost

In 2020, the average residential household used approximately 105,353 gallons of water at a cost of about \$646, or \$1.77 a day. With an average of 3.0 persons per household, the cost of water was about 59¢ a day per person.

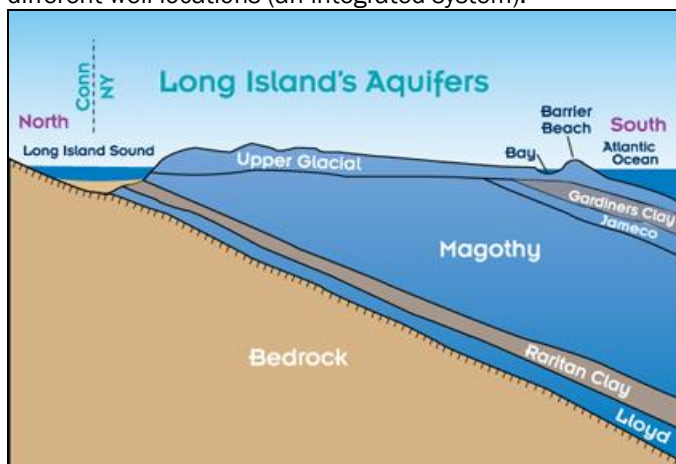
## Source, Quality & Quantity

Groundwater is the source of your drinking water supply. It is drawn from 16 wells located in the aquifer system beneath the land surface.

## The Aquifers

The aquifers are water-bearing geologic deposits of sand and clay that absorb and store about 45 percent of the rain and snow that fall on Long Island. NYAW- Merrick Operations Center has wells in the Magothy aquifer.

Not all wells are operating at the same time, which means that the water you receive is a blend of treated water from different well locations (an integrated system).



Not to scale

## Source Water Assessment

The NYSDOH, with assistance from the local health department and a consulting firm, has completed a source water assessment for this system, based on available information. Possible and actual threats to this drinking water source were evaluated. The source water assessment includes a susceptibility rating based on the risk posed by each potential source of contamination and how rapidly contaminants can move through the subsurface to the wells. The susceptibility of a water supply well to contamination is dependent upon both the presence of potential sources of contamination within the well's contributing area and the likelihood that the contaminant can travel through the environment to reach the well. The susceptibility rating is an estimate of the potential for contamination of the source water, it does not mean that the water delivered to consumers is or will become contaminated. See section "Are there contaminants in our drinking water?" for a list of the contaminants that have been detected (if any). The source water assessments provide resource managers with additional information for protecting source waters into the future.

Drinking water is derived from 16 wells. The source water assessment has rated most of the wells as having a very high susceptibility to industrial solvents and a high susceptibility to nitrates. The elevated susceptibility to industrial solvents is due primarily to point sources of contamination related to transportation routes and commercial/ industrial facilities and related activities in the assessment area. The high susceptibility to nitrate contamination is attributable to residential, commercial, and institutional land use and related practices in the assessment area, such as fertilizing lawns.

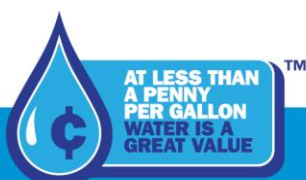
A copy of the assessment, including a map of the assessment area, can be obtained by contacting our Water Quality Manager at 516-632-2239.

## How is Your Water Treated?

Our water supply is obtained from wells located throughout our service area, and average about 500 feet in depth. In our area of southeastern Nassau County, the soil has naturally high iron and mineral content. The water dissolves these naturally occurring minerals, and while they are not health hazards, they can cause discolored water issues. Bacteriological pollutants are not usually present in wells at the average depth of 500 feet and, consequently, water directly from the well is drinkable. However, water treatment is required to protect the water in the distribution system and to minimize discolored water conditions.

### Treatment consists of:

1. Chlorination for bacteriological disinfection (using Sodium Hypochlorite)



**WE CARE ABOUT WATER. IT'S WHAT WE DO.®**

2. Caustic Soda (Sodium Hydroxide) to raise pH and minimize corrosivity to water mains and household plumbing
3. Filtration to remove iron at three well locations
4. Calciquest (Phosphate compound) to stabilize or sequester the iron not removed by filtration, and to act as a corrosion control inhibitor.
5. Granular Activated Carbon (GAC) to remove organics at one well location (US Navy / Northrop-Grumman plume site).

We take steps to reduce the potential for lead to leach from your pipes into the water. This is accomplished by adding a corrosion inhibitor (Calciquest is an Orthophosphate compound) to the water leaving our treatment facilities. There are steps that you can take to reduce your household's exposure to lead in drinking water. For more information, please review our Lead and Drinking Water Fact Sheet at:

[www.nyamwater.com/water-quality/lead-and-drinking-water](http://www.nyamwater.com/water-quality/lead-and-drinking-water)

## System Improvements

**In 2020, we continued to make significant upgrades to our system and infrastructure. These improvements include:**

- Replaced 14,893 feet of water main throughout the service territory.
- Replaced 10 fire hydrants.
- Replaced 114 service lines.
- Replaced 8,014 water meters.
- Completed replacement of the iron filtration media and drilled a new 3 Million-Gallon-Per-Day water supply well at the Newbridge Road Treatment Plant in North Bellmore.
- Drilled a new 3 Million-Gallon-Per-Day water supply well at the Jefferson Plant in Merrick.
- Completed design of a 6 Million-Gallon-Per-Day Advanced Oxidation Plant for removal of 1,4-Dioxane at the Seaman's Neck Treatment Plant in Wantagh.

**Improvements planned for 2021 include:**

- Replace approximately 14,700 feet of water main.
- Replace 5 fire hydrants.
- Replace 120 service lines.
- Replace approximately 1,500 water meters.
- Construct new well buildings at the Jefferson St. Plant in Merrick, and the Newbridge Plant in North Bellmore.
- Breaking ground on construction of the 6 Million-Gallon-Per-Day Advanced Oxidation Plant for removal of 1,4-Dioxane at the Seaman's Neck Treatment Plant in Wantagh.
- Drilling of a replacement 3 Million-Gallon-Per-Day water supply well at the Sunrise Mall Well Site in Massapequa.

## Do I Need to Take Special Precautions?

To ensure that tap water is safe to drink, the USEPA prescribes regulations limiting the number of certain contaminants in water provided by public water systems. U.S. Food and Drug Administration regulations establish

limits for contaminants in bottled water, which must provide the same protection for public health.

Drinking water, including bottled water, may reasonably be expected to contain at least small amounts of some contaminants. The presence of contaminants does not necessarily indicate that water poses a health risk. More information about contaminants and potential health effects can be obtained by calling the Environmental Protection Agency's Safe Drinking Water Hotline at 1-800-426-4791.

Although our drinking water meets all state and federal regulations, some people may be more vulnerable to disease-causing microorganisms or pathogens in drinking water than the general population. Immuno-compromised persons such as persons with cancer undergoing chemotherapy, persons who have undergone organ transplants, people with HIV/AIDS or other immune system disorders, some elderly, and infants can be particularly at risk from infections. These people should seek advice from their health care provider about their drinking water.

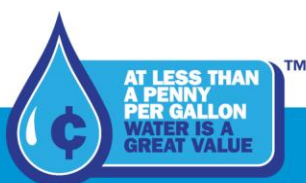
If you have questions, contact the NCDOH at 516-227-9692. EPA/CDC guidelines on appropriate means to lessen the risk of infection by *Cryptosporidium*, *Giardia* and other microbial pathogens are available from the Safe Drinking Water Hotline at 1-800-426-4791.

## Substances Expected to be in Drinking Water

In general terms, the sources of drinking water (both tap and bottled water) include rivers, lakes, streams, ponds, reservoirs, springs, and wells. As water travels over the surface of the land or through the ground, it dissolves naturally occurring minerals and can pick up substances resulting from the presence of animals or from human activities.

**Substances that may be present in source water include:**

- **Microbiological Contaminants:** Such as viruses and bacteria, which may come from sewage treatment plants, septic systems, agricultural livestock operations or wildlife.
- **Inorganic Contaminants (IOC's):** Such as salts and metals which can be naturally occurring or may result from urban storm water runoff, industrial or domestic wastewater discharges, oil and gas production, mining or farming.
- **Pesticides and Herbicides (SOC's):** Which may come from a variety of sources such as agriculture, urban storm water runoff and residential uses.
- **Organic Chemical Contaminants (VOC's):** Including synthetic and volatile organic chemicals which are by-products of industrial processes and petroleum production, and may also come from gas stations, urban storm water runoff and septic systems.
- **Radioactive Contaminants:** Which can be naturally occurring or may be the result of oil and gas production and mining activities.



For more information about contaminants and potential health effects, call the EPA's Safe Drinking Water Hotline at 1-800-426-4791.

## Cryptosporidiosis & Giardiasis

Although there have been no cases of Cryptosporidiosis in Nassau County attributable to the water supply, you should be aware of the risks to people with severely weakened immune systems. Cryptosporidiosis and Giardiasis are intestinal illnesses caused by microscopic parasites that can be transmitted several ways including through drinking water. Cryptosporidiosis can be very serious for people with weak immune systems, such as transplant patients; individuals receiving chemotherapy or dialysis, and people with Crohn's disease or HIV infection. Individuals who think they may have been exposed to Cryptosporidiosis or Giardiasis should contact their health care providers immediately.

Immuno-compromised patients who may have been advised by their health care provider that they may be at risk, especially when traveling, should observe the following:

- One minute of boiling water at a rolling boil will kill *Cryptosporidium parvum* and *Giardia lamblia*.
- Drinking bottled water does not guarantee that the water is free from Cryptosporidiosis or Giardiasis.

Contact your health care provider about your options. If you have questions, contact the NCDOH at 516-227-9692.

## Lead & Copper Rule Statements

The Lead and Copper Rule requires sampling for lead and copper at the tap. In 1992, the first-year testing was required; tap water was sampled in compliance with EPA regulations. Test results were excellent: at least 90 percent of the lead tests were well below 10 parts per billion, and for copper, below 0.5 parts per million, indicating that the company's corrosion control treatment processes continue to be effective. The same tests were done roughly every three years from 1997 through 2020 with similar results. We are on an approved reduced monitoring schedule, and the next round of homeowner monitoring for the Lead and Copper Rule was completed in the summer of 2023. If present, elevated levels of lead can cause serious health problems, especially for pregnant women and young children. Lead in drinking water is primarily from materials and components associated with service lines and home plumbing. New York American Water is responsible for providing high quality drinking water but cannot control the variety of materials used in plumbing components. When your water has been sitting for several hours, you can minimize the potential for lead exposure by flushing your tap for 30 seconds to 2 minutes before using water for drinking or cooking. If you are concerned about lead in drinking water, you may wish to have your water tested. Information on lead in drinking water, testing methods, and steps you can take to minimize exposure is available from the Safe Drinking Water Hotline at 1-800-426-4791 or at <http://www.epa.gov/safewater/lead>.

## How do I read the Water Quality Table?

The Water Quality Table – “Table of Detected Contaminants” is the most important section in this report, containing details on New York American Water's comprehensive testing program for drinking water at the tap. It compares the results from tests we performed in 2020 (and earlier) with the health standards established by federal, state, and local health authorities. Of approximately 165 substances or parameters tested, detectable levels were found for about 35; and these levels are trace amounts, well below the levels set to protect public health.

To review the quality of your drinking water, compare the result in the “Maximum Amount Detected” column with the Standard in the “MCL” column. That Standard is the highest level that is considered safe for drinking water. To be in compliance, the High result in the “Range: Low-High” column should be lower than the MCL Standard. For example, under **Metals & Inorganic Substances**, the “MCL” standard for Barium is 2,000 ppb and the “Maximum Amount Detected” result is 120 ppb, well below the maximum allowed level (or “MCL”).

Also review the “Compliance Achieved” and “Violation” columns to determine if New York American Water violated any standards. As you can see, our system had no violations. Further evidence of the quality of our water can be seen in the “Listing of Non-Detected (ND) Contaminants” — An extensive list of substances that we tested for and did not find in our distribution system and/or water sources.

The Definition of Terms below provides further explanation of the data.

## Definitions of Terms Used in This Report

- **Action Level (AL):** The concentration of a contaminant which, if exceeded, triggers treatment or other requirements which a water system must follow.
- **Maximum Contaminant Level (MCL):** The highest level of a contaminant that is allowed in drinking water. MCLs are set as close to the MCLGs as feasible.
- **Maximum Contaminant Level Goal (MCLG):** The level of a contaminant in drinking water below which there is no known or expected risk to health. MCLGs allow for a margin of safety.
- **MGD = Million Gallons per Day**
- **90th Percentile Value:** The values reported in the “Lead and Copper Rule” section represent the 90th percentile. A percentile is a value on a scale of 100 that indicates the percent of a distribution that is equal to or below it. The 90th percentile is equal to or greater than 90 percent of the lead and copper values detected in your water system.
- **N/A:** Not applicable



- **None Detected (ND):** Laboratory analysis indicates that the constituent is not present at the method detection level.
- **Parts Per Million (ppm):** Corresponds to one part of liquid in one million parts of liquid [Equivalent to “milligrams per liter” (mg/L)].
- **Parts per Billion (ppb):** Corresponds to one part of liquid in one billion parts of liquid [Equivalent to “micrograms per liter” (µg/L)].
- **Parts per Trillion (ppt):** Corresponds to one part of liquid in one trillion parts of liquid [Equivalent to “nanograms per liter”; or one second in approximately 31,506 years].
- **Picocuries per liter (pCi/L):** A measure of the radioactivity in water.
- **Treatment Technique (TT):** A required process intended to reduce the level of a contaminant in drinking water.
- **Total Dissolved Solids (TDS):** An overall indicator of the amount of minerals in the water.

the company and to the Health Department. NYS allows us to monitor for certain contaminants less than once per year because the concentrations of these contaminants are not expected to vary significantly from year-to-year. Some of the data, though representative of the water quality, are more than one year old.

For a copy of the Water Supplement containing detailed data on testing at the source water wells before treatment, call us at 516-632-2239 and request a copy.

<b>2020 STATISTICS AT-A-GLANCE</b>	
Wells Closed/Restricted	None
Violations of Standards	None
Typical Well Depth	500 Feet
Aquifers	Magothy
Pumping Stations	12
Service Area	20 Square Miles
Total Water Withdrawn	5,055,053,000 Gal.
Total Water Sales	4,837,659,000 Gal.
Total Water Lost from System*	259,890,000 Gal.
Population Served (approx.)	135,000
Customers Served (accounts)	45,018
Miles of Mains	433

\* Total water lost from the system includes “Accounted For” and “Unaccounted For” water. Non-revenue water is approx. 9.4% of total water delivered to the system; of which, approximately 5.1% is accounted for and 4.3% is unaccounted for.

### Water Quality Facts

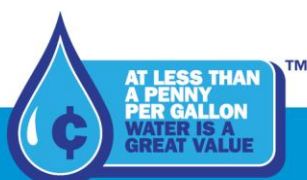
To provide high quality water, individual water samples are taken each year for chemical, physical, and microbiological tests. Testing can pinpoint a potential problem so that preventive action may be taken.

Tests are done on water taken from the well (“raw water”), water within our treatment facilities, water exiting our treatment plants at the point-of-entry to the distribution system, and from sites located throughout our distribution system after treatment. These tests are conducted in the company’s state certified laboratory, by the NCDOH Laboratory, and by independent, certified laboratories approved by the state, who report results simultaneously to

## Water Quality Table – Table of Detected Contaminants 2020 (SA2 - Merrick Operations)

### REGULATED SUBSTANCES

Contaminant (units)	Date Sampled	MCL	MCLG	Maximum Amount Detected	Range: Low-High	Violation (Yes/No)	Typical Source
<b>Microbiological</b>							
Total Coliform (% positive samples in any given month) <sup>1</sup>	2020 (highest month was August 2020)	TT=>5% samples positive	N/A	1.6% <sup>1</sup> (2 POS out of 126 total samples in August 2020)	ND (0%) – 1.6%	No	Naturally present in the environment
<b>Disinfection By-Products</b>							
TTHM's (Total Trihalomethanes) (ppb) <sup>2</sup>	Quarterly 2020	80	0	4.8	<1.0 – 4.8	No	By-product of drinking water disinfection
HAA5's (Total Haloacetic acids) (ppb) <sup>3</sup>		60	0	<2.0	<2.0 – <2.0	No	
<b>Disinfectants</b>							
Chlorine (ppm) <sup>4</sup>	2020	N/A	N/A	2.20	<0.10 - 2.20	No	Water additive used to control microbes
<b>Radiological<sup>5</sup></b>							
Gross Alpha Activity (pCi/L)	10/2018	15	0	8.06	ND – 8.06	No	Erosion of natural deposits
Gross Beta Activity (pCi/L)	10/2018	50	0	4.23	0.171 – 4.23	No	
Combined Radium-226 and Radium-228 (pCi/L)	09/2018	5	0	4.61	0.280 – 4.61	No	
Uranium (ug/L)	10/2018	30	0	0.187	ND – 0.187	No	



## Lead and Copper Rule (Tap water samples were collected from 54 homes in the service area)

Contaminant (units)	Date Sampled	Action Level	MCLG	Amount Detected (90th %tile)	Range (Low-High)	Violation (Yes/No)	Typical Source
Copper (ppm) <sup>6</sup>	07-09/2020	1.3	1.3	0.270	0.021- 0.340	No	Corrosion of household plumbing systems
Lead (ppb) <sup>7</sup>		15	0	1.4	ND - 6.6	No	

## Metals & Inorganic Substances

Contaminant (units)	Date Sampled	MCL	MCLG	Maximum Amount Detected	Range: Low-High	Violation (Yes/No)	Typical Source
Barium (ppb)	10/2020	2,000	2,000	120	ND - 120	No	Erosion of natural deposits
Calcium (ppm)	06/2020	N/A	N/A	5.4	ND - 5.4	No	Naturally occurring
Chlorides (ppm)	06/2020	250	N/A	26.7	ND - 26.7	No	Naturally occurring or indicative of road salt contamination
Iron (ppb) <sup>8</sup>	06/2020	300	N/A	940	ND - 940	No	Naturally occurring
Manganese (ppb) <sup>8</sup>	05/2020	300	N/A	89	ND - 89	No	Naturally occurring
Nickel (ppb)	11/2020	N/A	N/A	25.0	1.2- 25.0	No	Naturally occurring
Nitrates as N (ppm)	07/2020	10	10	0.320	ND - 0.320	No	Erosion of natural deposits; Runoff from fertilizers and septic tanks
Sodium (ppm) <sup>9</sup>	10/2020	N/A	N/A	37.5	2.6 - 37.5	No	Naturally occurring; Road salt; Water softeners
Sulfate (ppm)	06/2020	250	N/A	59.3	ND - 59.3	No	Naturally occurring; Road salt; Water softeners

## Organic Substances

Contaminant (units)	Date Sampled	MCL	MCLG	Maximum Amount Detected	Range: Low-High	Violation (Yes/No)	Typical Source
Trichloroethene (TCE)- (ppb)*	12/2020	5	0	22.5	ND - 22.5	No	Discharges from metal degreasing sites and other factories. Grumman-NAVY plume
<b>Specific Organic Compounds</b>							
1,4 dioxane (ppb)*	11/2020	1.0	N/A	1.50	ND - 1.50	No	Released into the environment from commercial and industrial sources and is associated with inactive and hazardous waste sites

## Physical Parameters & Unregulated Substances

Contaminant (units)	Date Sampled	Maximum Amount Detected	Range: Low-High	Typical Source
Alkalinity (ppm)	2020	48.5	27.9 - 48.35	N/A
Calcium Hardness (ppm)	2020	3.7	0.9 - 3.7	N/A
Color Index (units)	2020	15	ND - 15	Presence of metals such as copper, iron and manganese. Results greater than 15 units are considered 'discolored'.
Corrosivity (Langelier Index) <sup>10</sup>	2020	(-2.31)	(-3.27) - (-2.31)	N/A
Hardness, Total (ppm)	2020	10.1	1.7 - 10.1	N/A
Magnesium (ppm)	2020	1.9	ND - 1.10	Naturally occurring
pH (units) <sup>11</sup>	2020	7.1	7.0 - 7.1	N/A
Total Dissolved Solids (TDS) (ppm)	2020	123	42 - 123	N/A

### Footnotes:

- <sup>1</sup> A total of 1,449 distribution system bacteriological samples were taken in 2020, with 3 positive Total Coliform results = 0.21% positives for the year.
- <sup>2</sup> TTHM's mean the sum of: Bromoform, Bromodichloromethane, Dibromochloromethane, and Chloroform. The highest 'Locational Running Annual Average' was 4.8 ppb in 2020.
- <sup>3</sup> HAA5's includes the sum of: Monochloroacetic acid, Dichloroacetic acid, Trichloroacetic acid, Bromoacetic acid, and Dibromoacetic acid. The highest 'Locational Running Annual Average' was less than 2.0 ppb (<2.0") in 2020.
- <sup>4</sup> The running annual average of all Chlorine Residual readings (1,459) in the distribution system was **1.50 ppm** for 2020.
- <sup>5</sup> Radiological results are from individual raw water wells, and not distribution locations, as required by the NCDOH.
- <sup>6</sup> The level presented represents the 90th percentile of 54 sites tested. The "action level" for copper was not exceeded at any of 54 sites tested.
- <sup>7</sup> The level presented represents the 90th percentile of 54 sites tested. The "action level" for lead was not exceeded at any of 54 sites tested.
- <sup>8</sup> Higher levels of iron (up to 1,000 ppb) may be allowed by the state when justified by the water supplier, as is the case with NYAW - Merrick Operations district. The Total of iron and manganese should not exceed 500 ppb, unless allowed by the state, as is the case with NYAW - Merrick Operations district.



<sup>9</sup> Water containing more than 20 mg/L of sodium should not be used for drinking by persons on severely restricted sodium diets. Water containing more than 270 mg/L of sodium should not be used for drinking by people on moderately restricted sodium diets.

<sup>10</sup> The NCDOH recommends that the Langelier Saturation Index (for corrosivity) be as close to zero as possible.

<sup>11</sup> NCDOH guidelines recommend a pH range of 7.0 – 8.5. The running annual average of all pH readings in the distribution system taken during routine bacteriological testing was **7.10 units** in 2020.

\*See public notification attached for 1,4 dioxane information.

### Unregulated Contaminant Monitoring Rule (UCMR4):

The following parameters were tested for as per a required USEPA monitoring program (2018 – 2020) to try to quantify the presence and amount of emerging or unregulated compounds to see if any should be regulated by the EPA in the future. Unregulated contaminants are those for which USEPA has not established drinking water standards for. The purpose of unregulated contaminant monitoring is to assist USEPA in determining the occurrence of these constituents in drinking water and whether future regulation is warranted. (No Federal MCL's exist for these parameters to-date, although some might be already regulated by the NYSDOH.)

The following contaminants that we tested for on the treated water exiting our treatment plants (“Entry Point” locations) were detected as follows:

Contaminant (units)	Date Sampled	Maximum Amount Detected	Range: Low-High	Typical Source
Manganese (ppb)	2018	37	ND - 37	Naturally occurring
Germanium (ppb)	2018	0.41	ND – 0.41	Naturally occurring

The following contaminants that we tested for on the raw water wells were detected as follows:

Contaminant (units)	Date Sampled	Maximum Amount Detected	Range: Low-High	Typical Source
Bromide (ppb)	2018	190	ND - 190	Naturally occurring
Total Organic Carbon (ppb)	2018	901.5	ND – 901.5	Naturally occurring

The following contaminants that we tested for on distribution system locations were detected as follows:

Contaminant (units)	Date Sampled	Maximum Amount Detected	Range: Low-High	Typical Source
Total Haloacetic Acids – UCMR4 (ppb)	2018	0.83	ND – 0.83	By-product of drinking water disinfection
Total Haloacetic Acids – Bromide-related (ppb)	2018	0.38	ND – 0.38	By-product of drinking water disinfection

Total Haloacetic Acids for UCMR4 include the sum of the following contaminant combinations: Monochloroacetic acid, Monobromoacetic acid, Dichloroacetic acid, Trichloroacetic acid, Bromochloroacetic acid, Dibromoacetic acid, Bromodichloroacetic acid, Chlorodibromoacetic acid, Tribromoacetic acid.

### Unregulated Contaminant Monitoring Rule (UCMR4) – Listing of Non-Detected (ND) Contaminants (2018):

The following contaminants that we tested for under UCMR4 Monitoring Program were “Non-detected” (ND):

#### Alcohols:

- 1-butanol
- 2-methoxyethanol
- 2-propen-1-ol

#### Pesticides and byproducts:

- Alpha-Hexachlorocyclohexane
- Chlorpyrifos
- Dimethipin
- Ethoprop
- Oxyfluorfen
- Profenofos
- Tebuconazole
- Total Permethrin (cis- & trans-)
- Tribufos

#### Semi-Volatile Chemicals:

- Butylated hydroxyanisole (BHA)
- o-toluidine
- Quinolone

### Unregulated Contaminant Monitoring Rule (UCMR3):

The following parameters were tested for as per a required USEPA monitoring program (2013 - 2015) to try to quantify the presence and amount of emerging or unregulated compounds to see if any or all of them should be regulated by the USEPA in the future (No MCL's for these parameters to-date).

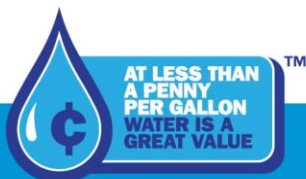
The following contaminants that we tested for on the treated water exiting our treatment plants (“Entry Point” locations) were detected as follows:

Contaminant (units)	Date Sampled	Maximum Amount Detected	Range: Low-High	Typical Source
1,4-Dioxane (ppb) *	2017-2019	1.35	ND – 1.35	Manufacturing solvent

\*NYS guidance level for 1,4-dioxane was 1.0 ppb before new regulations were put into effect in August of 2020. Special 1,4-dioxane sampling was performed on raw water wells in 2017-2019 by the water company for proactive, informational, and quality control purposes only, and not due to any regulatory requirement.

#### USEPA Health Advisory Definitions:

Health advisories provide information on contaminants that can cause human health effects and are known or anticipated to occur in drinking water. EPA’s Health Advisories are non-enforceable and non-regulatory and provide technical information to states agencies and other public health officials on health effects, analytical methodologies, and treatment technologies associated with drinking water contamination.



### **Special Message about new Regulations on Emerging Contaminants by NYSDOH:**

On August 26, 2020, NYS adopted new drinking water standards for public water systems that set maximum contaminant levels (MCLs) of 10 parts per trillion (ppt) each for perfluorooctanoic acid (PFOA) and perfluorooctanesulfonic acid (PFOS), and 1 part per billion (ppb) for 1,4-dioxane.

### **About Drinking Water Standards and MCLs**

A MCL is the highest level of a contaminant allowed in drinking water delivered by public water systems. They are enforceable regulatory limits. MCLs are set far below levels that cause health effects. According to the NYSDOH, because MCLs are set at levels with a large margin of protection, an exceedance of an MCL does not mean that water is unsafe for use while the public water system takes actions to reduce the levels.

The USEPA has also established guidance for the presence of PFOA and PFOS in drinking water. The EPA has established a non-enforceable health advisory level of 70 parts per trillion (ppt) for the sum of PFOA and PFOS. An MCL for 1,4-Dioxane in drinking water has not been established by the EPA.

### **What Are Emerging Compounds?**

1,4-Dioxane is a synthetic industrial chemical that is present in many goods, including paint strippers, dyes, greases, antifreeze, and aircraft deicing fluids, and in some consumer products such as deodorants, shampoos and cosmetics.

PFOA/PFOS are per- and polyfluoroalkyl substances (PFAS), which are a group of man-made chemicals that can be found in food packaging; commercial household products, including stain- and water-repellent fabrics (ex: Scotchgard), nonstick products (e.g., Teflon), polishes, waxes, paints, and cleaning products; and fire-fighting foams.

Emerging compounds can enter our water resources after being landfilled, spilled, discharged as waste, or by seepage and infiltration into the water table, eventually entering water supplies.

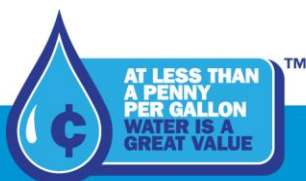
### **NYAW's Action Plan**

In advance of the adoption of these new standards by the State, New York American Water tested its entire water supply to determine the presence of these emerging compounds.

NYAW determined that, of the 55 sites that supply water across NYAW's service areas in Long Island and upstate New York, one site in your district has detections of emerging compounds above the NYS MCLs. Detections of 1,4-Dioxane at the Seamans Neck Well Station in North Wantagh/Levittown at 1.4 ppb. NYAW is pursuing Advanced Oxidation Process (AOP) treatment for 1,4-Dioxane at the Seamans Neck Well Station. NYAW has completed our AOP pilot testing and is working closely with the NCDOH on final treatment design. While AOP treatment will take time to fully install, NYAW's proactive approach has significantly reduced the time needed to install the right treatment system for our customers served by the Seamans Neck Well Station. Please see Public Notification below.

NYAW is pursuing the appropriate treatment where needed. While new treatment will take time to fully install, NYAW's proactive approach has significantly reduced the time needed to install the right treatment system for our customers.

When a public water system (PWS) is issued a deferral, the water system agrees to a schedule for corrective action and compliance with the new PFOS, PFOA, or 1,4-dioxane MCL's. In exchange, the NYSDOH agrees to defer enforcement actions, such as assessing fines, if the PWS is meeting established deadlines. Deferral recipients are required to update the Department and the NCDOH each calendar quarter on the status of the established deadlines. The Department can resume enforcement if the agreed upon deadlines are not met. Information about our deferral and established timelines can be found at the following site: <https://www.amwater.com/nyaw/water-quality/Emerging-Compounds/seamans-neck>



# **IMPORTANT INFORMATION ABOUT YOUR DRINKING WATER**

## **Deferral Issued for 1,4-Dioxane to New York American Water (NYAW) – Merrick**

### **Why are you receiving this notice/information?**

You are receiving this notice because testing of our public water system found the chemical 1,4-Dioxane in your drinking water above New York State's maximum contaminant level (MCL) of 1 ppb for 1,4-dioxane. The MCLs are set well below levels known to cause health effects in animal studies. Therefore, consuming water with 1,4-dioxane at the level detected does not pose a significant health risk. Your water continues to be acceptable for all uses.

NYAW - Merrick has submitted, and the New York State Department of Health (Department) has issued, a deferral to NYAW - Merrick. When a public water system is issued a deferral, the water system agrees to a schedule for corrective action and compliance with the new MCLs. In exchange, the Department agrees to defer enforcement actions, such as assessing fines, if the water system is meeting the established deadlines. We are required to update the Department and the Nassau County Department of Health each calendar quarter on the status of our projects. If we do not meet the agreed upon deadlines, the Department can resume enforcement.

### **What are the health effects of 1,4-dioxane?**

Laboratory studies show that 1,4-dioxane caused liver cancer in animals exposed at high levels throughout their lifetime. Other types of cancer have also been reported, although less consistently than liver cancer. There is no evidence of 1,4-dioxane cancer effects in humans. The United States Environmental Protection Agency considers 1,4-dioxane a likely human carcinogen based upon studies of animals exposed to high levels of this chemical over their entire lifetimes. At the level of 1,4-dioxane detected in your water, exposure from drinking water and food preparation is well below 1,4-dioxane exposures associated with health effects.

### **What is New York State doing about 1,4-Dioxane in public drinking water?**

The New York State Department of Health (NYS DOH) has adopted a drinking water regulation that requires all public water systems to test for 1,4-dioxane. If found above the MCLs, the water supplier must take steps to lower the level to meet the standard. Exceedances of the MCL signal that steps should be taken by the water system to reduce contaminant levels.

### **What is being done to remove these contaminants?**

NYAW - Merrick is in the process of installing treatment to remove 1,4-dioxane at our Seamans Neck Road Facility and will operate impacted wells in a last on first off sequence to minimize exposure to 1,4-Dioxane. Additional information will be shared as further testing and progress occurs. This process is similar for any chemical detected in public drinking water that requires mitigation. The compliance timetable will ensure that your drinking water will meet the MCL as rapidly as possible. The deferral is effective until August 25, 2022.

### **Where can I get more information?**

For more information, please contact our Customer Service Center at 1-877-426-6999 or Natasha Niola, Water Quality Manager at 516-632-2239. You can also contact the Nassau County Health Department at (516) 227-9692. If you have additional questions about these contaminants and your health, talk to your health care provider who is most familiar with your health history and can provide advice and assistance about understanding how drinking water may affect your personal health.

**Public Water System ID#: NY2902840**

**Date: January 21, 2021**





## Listing of Non-Detected (ND) Contaminants – 2020 (SA2 - Merrick Operations):

None of the following compounds that we analyzed for were detected in your drinking water at the respective method detection levels:

### Microbiological:

E.coli

### Inorganics & Physical:

Ammonia as N  
Cyanide, free  
Fluoride  
Nitrite as N  
Perchlorate  
Surfactants (as MBAS)  
Turbidity

### Metals:

Antimony  
Arsenic  
Beryllium  
Cadmium  
Chromium  
Mercury  
Selenium  
Silver  
Thallium  
Zinc

### Miscellaneous:

Asbestos fibers

### Volatile Organic Compounds

#### (VOC's):

Benzene  
Bromobenzene  
Bromochloromethane  
Bromomethane  
n-Butylbenzene  
sec-Butylbenzene  
tert-Butylbenzene  
Carbon Tetrachloride  
Chlorobenzene  
Chloroethane  
Chloromethane  
Chlorodifluoromethane  
2-Chlorotoluene  
4-Chlorotoluene  
Dibromomethane  
1,2-Dichlorobenzene  
1,3-Dichlorobenzene  
1,4-Dichlorobenzene (Meta)  
Dichlorodifluoromethane  
1,1-Dichloroethane  
1,2-Dichloroethane  
1,1-Dichloroethane  
cis-1,2-Dichloroethene  
trans-1,2-Dichloroethene  
1,2-Dichloropropane  
1,3-Dichloropropane  
2,2-Dichloropropane  
1,1-Dichloropropene  
cis-1,3-Dichloropropene  
trans-1,3-Dichloropropene  
Ethylbenzene  
Hexachlorobutadiene  
Isopropylbenzene  
4-Isopropyltoluene  
Methyl Tert Butyl Ether (MTBE)  
Methylene Chloride  
(Dichloromethane)  
n-Propylbenzene  
Styrene  
1,1,2-trichloro 1,2,2-trifluoroethane  
1,1,1,2-Tetrachloroethane  
1,1,2,2-Tetrachloroethane  
Tetrachloroethene (PCE)  
Toluene  
1,2,3-Trichlorobenzene  
1,2,4-Trichlorobenzene  
1,1,1-Trichloroethane  
1,1,2-Trichloroethane  
Trichlorofluoromethane  
1,2,3-Trichloropropane  
1,2,4-Trimethylbenzene  
1,3,5-Trimethylbenzene  
M-Xylene  
O-Xylene  
P-Xylene  
Vinyl Chloride

### Synthetic (Specific) Organic Compounds (SOC's)\*

#### Regulated Group #1:

Alachlor  
Aldicarb  
Aldicarb Sulfone  
Aldicarb Sulfoxide  
Atrazine  
Carbofuran  
Chlordane, Total  
1,2-Dibromo-3-Chloropropane (DBCP)  
2,4-D  
Endrin  
1,2-Dibromomethane (EDB)  
Heptachlor  
Heptachlor Epoxide  
Lindane  
Methoxychlor  
PCB's  
Pentachlorophenol  
Toxaphene  
2,4,5-TP (Silvex)

#### Regulated Group #2:

Aldrin  
Benzo(a)pyrene  
Butachlor  
Carbaryl  
Dalapon  
Di (2-Ethylhexyl) adipate  
Di (2-Ethylhexyl) phthalate  
Dicamba  
Dieldrin  
Dinoseb  
Diquat  
Endothall  
Glyphosate  
Hexachlorobenzene  
Hexachlorocyclopentadiene  
3-Hydroxycarbofuran  
Methomyl  
Metolachlor  
Metribuzin  
Oxamyl (Vydate)  
Picloram  
Propachlor  
Simazine  
2,3,7,8-TCDD (Dioxin)

*\* Synthetic (Specific) Organic Compounds (SOC's) are mainly Pesticides and Herbicides, and are required to be tested on raw water wells, and not on distribution locations, as per NCDOH requirements.*

### Unregulated Contaminant Monitoring Rule (UCMR3):

The following parameters were tested for as per a required USEPA monitoring program (2013 - 2015) to try to quantify the presence and amount of emerging or unregulated compounds to see if any should be regulated by the EPA in the future.

The following contaminants that we tested for on the treated water exiting our treatment plants ("point of entry" locations) were "Non-detected" (ND):

#### UCMR3 Volatile Organic Compounds (VOC's) Group (all ND):

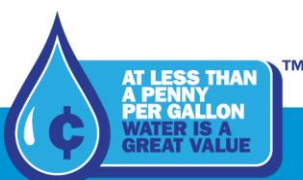
1,1-Dichloroethane  
1,2,3-Trichloropropane  
1,3-Butadiene  
Bromochloromethane (halon1011)  
Bromomethane  
Chlorodifluoromethane  
Chloromethane

#### UCMR# Perfluorinated Compounds Group (all ND):

Perfluorooctanesulfonic acid (PFOS)  
Perfluorooctanoic acid (PFOA)  
Perfluorononanoic acid (PFNA)  
Perfluorohexanesulfonic acid (PFHxS)  
Perfluoroheptanoic acid (PFHpA)  
Perfluorobutanesulfonic acid (PFBS)

#### UCMR3 Hormones Group (all ND):

Estradiol (17beta-)  
Equilin  
4-Androstene-3,17-dione  
Estrone  
Ethinylestradiol (ethinyl estradiol)  
Hydroxyestradiol  
Testosterone





## WATER QUALITY YOU CAN TRUST

### RESULTS TO PROVE IT

We have an exceptional track record when it comes to water quality and drinking water regulatory compliance. That's why we invite you to read our latest Water Quality Report, specifically for your local community.



NEW YORK  
AMERICAN WATER

WE KEEP LIFE FLOWING®



## PROVIDING SAFE, QUALITY WATER SERVICE

- Our drinking water meets or surpasses all primary state and federal standards, including regulations related to lead.
- Statewide, we perform thousands of tests each year on the water before it leaves our treatment plants, plus a significant number of tests in the distribution system.
- Our team of water quality experts sample and interpret data regularly, following state quality control standards. Our team utilizes certified labs across the state to process and analyze these samples. We sample above and beyond the required regulations provided by the USEPA and the local health departments.

### **See how we're doing in your community.**

Every year, we provide a detailed analysis of the water we deliver to our communities in our Water Quality Reports. To learn more about our commitment to water quality or to view the Water Quality Report for your area, visit us online at [newyorkamwater.com](https://www.newyorkamwater.com). Under Water Quality, select Water Quality Reports.

**QUALITY. ONE MORE WAY  
WE KEEP LIFE FLOWING.**

**ATTACHMENT C**

**Water Quality Data**



575 Broad Hollow Road, Melville, NY 11747  
 TEL: (631) 694-3040 FAX: (631) 420-8436  
[www.pacelabs.com](http://www.pacelabs.com)

# Laboratory Results

Results for the samples and analytes requested  
 The lab is not directly responsible for the integrity of the sample before receipt at the lab and is responsible only for the certified tests

### Sample Information:

Type: Drinking Water  
 Origin: Raw Well  
 Routine

**New York American Water - Merrick OPS**  
**60 Brooklyn Avenue**  
**Merrick, NY 11566**

**Lab No. : 70169356001**  
**Client Sample ID.: N-09338**

**Attn To :** Natasha Niola  
 Federal ID : 2902840  
 Collected : 04/15/2021 09:00 AM Point N-09338  
 Received : 04/15/2021 01:27 PM Location Seamanneck 4 Well  
 Collected By CLIENT

**Sample Comments:**

Samples were received outside of the recommended temperature range of 0-6 degrees Celsius. The samples were received from the field on ice and the cooling process has begun.

Analytical Method: EPA 522		Prep Method: EPA 522			Prep Date: 04/25/2021 3:07 PM		
Parameter(s)	Results	Qualifier	D.F.	Units	Limit	Analyzed:	Container:
1,4-Dioxane (p-Dioxane)	1.6*		1	ug/L	1	04/26/2021 7:31 PM	001 AG2R1/2
Surr: 1,4-Dioxane-d8 (S)	93%		1	%REC		04/26/2021 7:31 PM	001 AG2R1/2

**Qualifiers:**

DF - Dilution Factor, if reported, represents the factor applied to the reported data due to changes in sample preparation, dilution of the sample aliquot, or moisture content.  
 ND - Not Detected at or above adjusted reporting limit.  
 J - Estimated concentration above the adjusted method detection limit and below the adjusted reporting limit. Estimated value - below calibration range  
 U - Indicates the compound was analyzed for, but not detected

Jennifer Aracri

Test results meet the requirements of NELAC unless otherwise noted.

This report shall not be reproduced except in full, without the written approval of the laboratory.

Result(s) reported meet(s) NYS Regulatory Limit(s).  
 Result(s) flagged with \* Exceed NYS Regulatory Limit(s). Limit Noted.

Date Reported: 04/27/2021



# Laboratory Results

Results for the samples and analytes requested  
 The lab is not directly responsible for the integrity of the sample before receipt at the lab and is responsible only for the certified tests

**Sample Information:**

Type: Drinking Water  
 Origin: Raw Well  
 Routine

**New York American Water - Merrick OPS**  
**60 Brooklyn Avenue**  
**Merrick, NY 11566**

**Lab No. : 70169356002**  
**Client Sample ID.: GAC-3S/4S**

**Attn To :** Natasha Niola  
 Federal ID : 2902840  
 Collected : 04/15/2021 08:35 AM Point GAC-3S/4S  
 Received : 04/15/2021 01:27 PM Location Seamanneck Wells 3/4  
 Collected By CLIENT

<u>Analytical Method:</u> EPA 522		<u>Prep Method:</u> EPA 522			<u>Prep Date:</u> 04/25/2021 3:07 PM		
<u>Parameter(s)</u>	<u>Results</u>	<u>Qualifier</u>	<u>D.F.</u>	<u>Units</u>	<u>Limit</u>	<u>Analyzed:</u>	<u>Container:</u>
1,4-Dioxane (p-Dioxane)	<b>1.7*</b>		1	ug/L	1	04/26/2021 7:51 PM	002 AG2R1/2
Surr: 1,4-Dioxane-d8 (S)	93%		1	%REC		04/26/2021 7:51 PM	002 AG2R1/2

Qualifiers:

DF - Dilution Factor, if reported, represents the factor applied to the reported data due to changes in sample preparation, dilution of the sample aliquot, or moisture content.  
 ND - Not Detected at or above adjusted reporting limit.  
 J - Estimated concentration above the adjusted method detection limit and below the adjusted reporting limit. Estimated value - below calibration range  
 U - Indicates the compound was analyzed for, but not detected

Jennifer Aracri

Test results meet the requirements of NELAC unless otherwise noted.

This report shall not be reproduced except in full, without the written approval of the laboratory.

Result(s) reported meet(s) NYS Regulatory Limit(s).  
 Result(s) flagged with \* Exceed NYS Regulatory Limit(s). Limit Noted.

Date Reported: 04/27/2021

**WorkOrder :**  
70169356

## Laboratory Certifications

---

**Pace Analytical Services Long Island**

Delaware Certification # NY10478  
Virginia Certification # 460302  
575 Broad Hollow Rd, Melville, NY 11747  
New York Certification #: 10478 Primary Accrediting Body  
New Jersey Certification #: NY158  
Pennsylvania Certification #: 68-00350  
Connecticut Certification #: PH-0435  
Maryland Certification #: 208  
Rhode Island Certification #: LAO00340  
Massachusetts Certification #: M-NY026  
New Hampshire Certification #: 2987

WO#: 70169356



70169356

# Sample Request Form PUBLIC WATER SUPPLIER

WELL OFF LINE

WELL RUN TO SYSTEM

YES  NO VOC'S PRESERVED WITH HCI

Date: 4/15/21

Collected By: John Dunn

Accepted By: Veranne Saeger 13:27 B

Cooler Temp: 8.8 °C

**Client Info:**  
 Name or Code: New York Amer can water  
 Address: 60 Rockaway Hill  
Merck NJ 0711566  
 Phone #: 516 2334328  
 Attn: John Dunn  
 Proj. # or (Name): Capital  
 Bill To: \_\_\_\_\_  
 Copies To: \_\_\_\_\_

Sample Type	Purpose	Origin	Treatment Types
PW - Potable Water	RO - Routine	D - Distribution	AST - Air Stripper
GW - Groundwater	RE - Resample	RW - Raw Well	GAC - Granular Activated Charcoal
SW - Surface Water	S - Special	TW - Treated Well	N - Nitrate Removal Plant
WW - Waste Water		T - Tank	FE - Iron Removal Plant
AQ - Aqueous		MW - Monitoring Well	O - Other
S - Soil		I - Influent	
		E - Effluent	

**Sample Info:**

Date/Time Collected:	Sample Type	Location	Origin	Treatment Type	Purpose	Field Readings Cl <sub>2</sub> pH/Temp	Analysis	Lab No.
4/15 900	PW	N-09338	RW		RO	-	1-4 Dioxane	Run to system
4/15 835	PW	GAC35/45	RW		RO	Cl <sub>2</sub> 6.9		Run to system

Remarks: Bill to capital





Sample Condition Upon Receipt

**WO# : 70169356**  
**PM: JSA**      **Due Date: 04/29/21**  
**CLIENT: NYAW**

Client Name: NYAW

Courier:  Fed Ex  UPS  USPS  Client  Commercial  Pace  Other

Tracking #: \_\_\_\_\_

Custody Seal on Cooler/Box Present:  Yes  No    Seals intact:  Yes  No

Packing Material:  Bubble Wrap  Bubble Bags  Ziploc  None  Other

Thermometer Used: TH091      Correction Factor: +0.0

Cooler Temperature(°C): 8.8      Cooler Temperature Corrected(°C): 8.8

Temp should be above freezing to 6.0°C  
 USDA Regulated Soil {  N/A, water sample }

Temperature Blank Present:  Yes  No

Type of Ice: Wet  None

Samples on ice, cooling process has begun

Date/Time 5035A kits placed in freezer \_\_\_\_\_

Date and Initials of person examining contents: MS4/15/21

Did samples originate in a quarantine zone within the United States: AL, AR, CA, FL, GA, ID, LA, MS, NC, NM, NY, OK, OR, SC, TN, TX, or VA (check map)?  Yes  No

Did samples originate from a foreign source including Hawaii and Puerto Rico)?  Yes  No

If Yes to either question, fill out a Regulated Soil Checklist (F-LI-C-010) and include with SCUR/COC paperwork.

		COMMENTS:
Chain of Custody Present:	<input checked="" type="checkbox"/> Yes <input type="checkbox"/> No	1.
Chain of Custody Filled Out:	<input checked="" type="checkbox"/> Yes <input type="checkbox"/> No	2.
Chain of Custody Relinquished:	<input checked="" type="checkbox"/> Yes <input type="checkbox"/> No	3.
Sampler Name & Signature on COC:	<input checked="" type="checkbox"/> Yes <input type="checkbox"/> No <input type="checkbox"/> N/A	4.
Samples Arrived within Hold Time:	<input checked="" type="checkbox"/> Yes <input type="checkbox"/> No	5.
Short Hold Time Analysis (<72hr):	<input type="checkbox"/> Yes <input checked="" type="checkbox"/> No	6.
Rush Turn Around Time Requested:	<input type="checkbox"/> Yes <input checked="" type="checkbox"/> No	7.
Sufficient Volume: (Triple volume provided for _____)	<input checked="" type="checkbox"/> Yes <input type="checkbox"/> No	8.
Correct Containers Used:	<input checked="" type="checkbox"/> Yes <input type="checkbox"/> No	9.
-Pace Containers Used:	<input checked="" type="checkbox"/> Yes <input type="checkbox"/> No	10.
Containers Intact:	<input checked="" type="checkbox"/> Yes <input type="checkbox"/> No	10.
Filtered volume received for Dissolved tests	<input type="checkbox"/> Yes <input type="checkbox"/> No <input checked="" type="checkbox"/> N/A	11. Note if sediment is visible in the dissolved container.
Sample Labels match COC:	<input checked="" type="checkbox"/> Yes <input type="checkbox"/> No	12.
-Includes date/time/ID, Matrix: SL <u>WT</u> OIL		
All containers needing preservation have been checked?	<input type="checkbox"/> Yes <input type="checkbox"/> No <input checked="" type="checkbox"/> N/A	13. <input type="checkbox"/> HNO <sub>3</sub> <input type="checkbox"/> H <sub>2</sub> SO <sub>4</sub> <input type="checkbox"/> NaOH <input type="checkbox"/> HCl
pH paper Lot #		Sample #
All containers needing preservation are found to be in compliance with method recommendation? (HNO <sub>3</sub> , H <sub>2</sub> SO <sub>4</sub> , HCl, NaOH>9 Sulfide, NAOH>12 Cyanide)	<input type="checkbox"/> Yes <input type="checkbox"/> No <input checked="" type="checkbox"/> N/A	Initial when completed: _____ Lot # of added preservative: _____ Date/Time preservative added: _____
Exceptions: VOA, Coliform, TOC/DOC, Oil and Grease, DRO/8015 (water). Per Method, VOA pH is checked after analysis		
Samples checked for dechlorination:	<input type="checkbox"/> Yes <input type="checkbox"/> No <input checked="" type="checkbox"/> N/A	14. Positive for Res. Chlorine? Y N
KI starch test strips Lot #		
Residual chlorine strips Lot #		
SM 4500 CN samples checked for sulfide?	<input type="checkbox"/> Yes <input type="checkbox"/> No <input checked="" type="checkbox"/> N/A	15.
Lead Acetate Strips Lot #		
Headspace in VOA Vials [ >6mm]:	<input type="checkbox"/> Yes <input type="checkbox"/> No <input checked="" type="checkbox"/> N/A	16.
Trip Blank Present:	<input type="checkbox"/> Yes <input type="checkbox"/> No <input checked="" type="checkbox"/> N/A	17.
Trip Blank Custody Seals Present	<input type="checkbox"/> Yes <input type="checkbox"/> No <input checked="" type="checkbox"/> N/A	
Pace Trip Blank Lot # (if applicable): _____		

Client Notification/ Resolution: \_\_\_\_\_ Field Data Required? Y / N

Person Contacted: \_\_\_\_\_ Date/Time: \_\_\_\_\_

Comments/ Resolution: \_\_\_\_\_

\_\_\_\_\_  
 \_\_\_\_\_  
 \_\_\_\_\_



# Laboratory Results

Results for the samples and analytes requested  
 The lab is not directly responsible for the integrity of the sample before receipt at the lab and is responsible only for the certified tests

### Sample Information:

Type: Drinking Water  
 Origin: Raw Well  
 Routine

**New York American Water - Merrick OPS**  
**60 Brooklyn Avenue**  
**Merrick, NY 11566**

**Lab No. : 70172196001**  
**Client Sample ID.: N-14347**

**Attn To :** Natasha Niola  
 Federal ID : 2902840  
 Collected : 05/07/2021 10:30 AM Point N-14347  
 Received : 05/07/2021 01:22 PM Location Seaman Neck #3  
 Collected By CLIENT

**Sample Comments:**

Samples were received outside of the recommended temperature range of 0-6 degrees Celsius. The samples were received from the field on ice and the cooling process has begun.

RUN TO WASTE

Analytical Method:EPA 200.8

Parameter(s)	Results	Qualifier	D.F.	Units	Limit	Analyzed:	Container:
Lead	<1.0		1	ug/L	15	05/21/2021 9:49 AM	001 BP4N1/1
Thallium	<0.30		1	ug/L	2	05/21/2021 9:49 AM	001 BP4N1/1

Analytical Method:EPA 300.0

Parameter(s)	Results	Qualifier	D.F.	Units	Limit	Analyzed:	Container:
Chloride	17.6		1	mg/L	250	05/20/2021 11:10	001 BP4U1/1

Analytical Method:EPA 522

Prep Method: EPA 522

Prep Date: 05/10/2021 4:31 PM

Parameter(s)	Results	Qualifier	D.F.	Units	Limit	Analyzed:	Container:
1,4-Dioxane (p-Dioxane)	<b>2.0*</b>		1	ug/L	1	05/11/2021 11:58	001 AG2R1/2
Surr: 1,4-Dioxane-d8 (S)	101%		1	%REC		05/11/2021 11:58	001 AG2R1/2

Analytical Method:EPA 524.2

Parameter(s)	Results	Qualifier	D.F.	Units	Limit	Analyzed:	Container:
1,1,1,2-Tetrachloroethane	<0.50		1	ug/L	5	05/16/2021 4:31 PM	001 VG9C1/2
1,1,1-Trichloroethane	<0.50		1	ug/L	5	05/16/2021 4:31 PM	001 VG9C1/2
1,1,2,2-Tetrachloroethane	<0.50		1	ug/L	5	05/16/2021 4:31 PM	001 VG9C1/2
1,1,2-Trichloroethane	<0.50		1	ug/L	5	05/16/2021 4:31 PM	001 VG9C1/2
1,1,2-Trichlorotrifluoroethane	<0.50	N3	1	ug/L	5	05/16/2021 4:31 PM	001 VG9C1/2
1,1-Dichloroethane	<0.50		1	ug/L	5	05/16/2021 4:31 PM	001 VG9C1/2
1,1-Dichloroethene	<0.50		1	ug/L	5	05/16/2021 4:31 PM	001 VG9C1/2
1,1-Dichloropropene	<0.50		1	ug/L	5	05/16/2021 4:31 PM	001 VG9C1/2
1,2,3-Trichlorobenzene	<0.50		1	ug/L	5	05/16/2021 4:31 PM	001 VG9C1/2
1,2,3-Trichloropropane	<0.50		1	ug/L	5	05/16/2021 4:31 PM	001 VG9C1/2
1,2,4-Trichlorobenzene	<0.50		1	ug/L	5	05/16/2021 4:31 PM	001 VG9C1/2
1,2,4-Trimethylbenzene	<0.50		1	ug/L	5	05/16/2021 4:31 PM	001 VG9C1/2
1,2-Dichlorobenzene	<0.50		1	ug/L	5	05/16/2021 4:31 PM	001 VG9C1/2
1,2-Dichloroethane	<0.50		1	ug/L	5	05/16/2021 4:31 PM	001 VG9C1/2
1,2-Dichloropropane	<0.50		1	ug/L	5	05/16/2021 4:31 PM	001 VG9C1/2
1,3,5-Trimethylbenzene	<0.50		1	ug/L	5	05/16/2021 4:31 PM	001 VG9C1/2
1,3-Dichlorobenzene	<0.50		1	ug/L	5	05/16/2021 4:31 PM	001 VG9C1/2
1,3-Dichloropropane	<0.50		1	ug/L	5	05/16/2021 4:31 PM	001 VG9C1/2
1,4-Dichlorobenzene	<0.50		1	ug/L	5	05/16/2021 4:31 PM	001 VG9C1/2
2,2-Dichloropropane	<0.50		1	ug/L	5	05/16/2021 4:31 PM	001 VG9C1/2

Qualifiers:

DF - Dilution Factor, if reported, represents the factor applied to the reported data due to changes in sample preparation, dilution of the sample aliquot, or moisture content.  
 ND - Not Detected at or above adjusted reporting limit.  
 J - Estimated concentration above the adjusted method detection limit and below the adjusted reporting limit. Estimated value - below calibration range  
 U - Indicates the compound was analyzed for, but not detected  
 See qualifiers page for additional qualifier definitions.

Jennifer Aracri

Test results meet the requirements of NELAC unless otherwise noted.

This report shall not be reproduced except in full, without the written approval of the laboratory.

Result(s) reported meet(s) NYS Regulatory Limit(s).  
 Result(s) flagged with \* Exceed NYS Regulatory Limit(s). Limit Noted.



# Laboratory Results

Results for the samples and analytes requested  
 The lab is not directly responsible for the integrity of the sample before receipt at the lab and is responsible only for the certified tests

## Sample Information:

Type: Drinking Water  
 Origin: Raw Well  
 Routine

**New York American Water - Merrick OPS**  
**60 Brooklyn Avenue**  
**Merrick, NY 11566**

**Lab No. : 70172196001**  
**Client Sample ID.: N-14347**

**Attn To : Natasha Niola**

Federal ID : 2902840

Collected : 05/07/2021 10:30 AM Point N-14347

Received : 05/07/2021 01:22 PM Location Seaman Neck #3

Collected By CLIENT

**Sample Comments:**

Samples were received outside of the recommended temperature range of 0-6 degrees Celsius. The samples were received from the field on ice and the cooling process has begun.

**RUN TO WASTE**

2-Chlorotoluene	<0.50	1	ug/L	5	05/16/2021 4:31 PM	001 VG9C1/2
4-Chlorotoluene	<0.50	1	ug/L	5	05/16/2021 4:31 PM	001 VG9C1/2
Benzene	<0.50	1	ug/L	5	05/16/2021 4:31 PM	001 VG9C1/2
Bromobenzene	<0.50	1	ug/L	5	05/16/2021 4:31 PM	001 VG9C1/2
Bromochloromethane	<0.50	1	ug/L	5	05/16/2021 4:31 PM	001 VG9C1/2
Bromodichloromethane	<0.50	1	ug/L		05/16/2021 4:31 PM	001 VG9C1/2
Bromoform	<0.50	1	ug/L		05/16/2021 4:31 PM	001 VG9C1/2
Bromomethane	<0.50	1	ug/L	5	05/16/2021 4:31 PM	001 VG9C1/2
Carbon tetrachloride	<0.50	1	ug/L	5	05/16/2021 4:31 PM	001 VG9C1/2
Chlorobenzene	<0.50	1	ug/L	5	05/16/2021 4:31 PM	001 VG9C1/2
Chlorodifluoromethane	<0.50	N3 1	ug/L	5	05/16/2021 4:31 PM	001 VG9C1/2
Chloroethane	<0.50	1	ug/L	5	05/16/2021 4:31 PM	001 VG9C1/2
Chloroform	<0.50	1	ug/L		05/16/2021 4:31 PM	001 VG9C1/2
Chloromethane	<0.50	1	ug/L	5	05/16/2021 4:31 PM	001 VG9C1/2
Dibromochloromethane	<0.50	1	ug/L		05/16/2021 4:31 PM	001 VG9C1/2
Dibromomethane	<0.50	1	ug/L	5	05/16/2021 4:31 PM	001 VG9C1/2
Dichlorodifluoromethane	<0.50	1	ug/L	5	05/16/2021 4:31 PM	001 VG9C1/2
Ethylbenzene	<0.50	1	ug/L	5	05/16/2021 4:31 PM	001 VG9C1/2
Hexachloro-1,3-butadiene	<0.50	1	ug/L	5	05/16/2021 4:31 PM	001 VG9C1/2
Isopropylbenzene (Cumene)	<0.50	1	ug/L	5	05/16/2021 4:31 PM	001 VG9C1/2
Methyl-tert-butyl ether	<0.50	1	ug/L	10	05/16/2021 4:31 PM	001 VG9C1/2
Methylene Chloride	<0.50	1	ug/L	5	05/16/2021 4:31 PM	001 VG9C1/2
Styrene	<0.50	1	ug/L	5	05/16/2021 4:31 PM	001 VG9C1/2
Tetrachloroethene	<0.50	1	ug/L	5	05/16/2021 4:31 PM	001 VG9C1/2
Toluene	<0.50	1	ug/L	5	05/16/2021 4:31 PM	001 VG9C1/2
Total Trihalomethanes (Calc.)	<0.50	1	ug/L	80	05/16/2021 4:31 PM	001 VG9C1/2
Trichloroethene	<b>17.3*</b>	D6 1	ug/L	5	05/16/2021 4:31 PM	001 VG9C1/2
Trichlorofluoromethane	<0.50	1	ug/L	5	05/16/2021 4:31 PM	001 VG9C1/2
Vinyl chloride	<0.50	1	ug/L	2	05/16/2021 4:31 PM	001 VG9C1/2
cis-1,2-Dichloroethene	<0.50	1	ug/L	5	05/16/2021 4:31 PM	001 VG9C1/2
cis-1,3-Dichloropropene	<0.50	1	ug/L	5	05/16/2021 4:31 PM	001 VG9C1/2
m&p-Xylene	<0.50	1	ug/L	5	05/16/2021 4:31 PM	001 VG9C1/2
n-Butylbenzene	<0.50	1	ug/L	5	05/16/2021 4:31 PM	001 VG9C1/2
n-Propylbenzene	<0.50	1	ug/L	5	05/16/2021 4:31 PM	001 VG9C1/2
o-Xylene	<0.50	1	ug/L	5	05/16/2021 4:31 PM	001 VG9C1/2
p-Isopropyltoluene	<0.50	1	ug/L	5	05/16/2021 4:31 PM	001 VG9C1/2
sec-Butylbenzene	<0.50	1	ug/L	5	05/16/2021 4:31 PM	001 VG9C1/2
tert-Butylbenzene	<0.50	1	ug/L	5	05/16/2021 4:31 PM	001 VG9C1/2
trans-1,2-Dichloroethene	<0.50	1	ug/L	5	05/16/2021 4:31 PM	001 VG9C1/2

**Qualifiers:**

DF - Dilution Factor, if reported, represents the factor applied to the reported data due to changes in sample preparation, dilution of the sample aliquot, or moisture content.

ND - Not Detected at or above adjusted reporting limit.

J - Estimated concentration above the adjusted method detection limit and below the adjusted reporting limit. Estimated value - below calibration range

U - Indicates the compound was analyzed for, but not detected

See qualifiers page for additional qualifier definitions.

Result(s) reported meet(s) NYS Regulatory Limit(s).

Result(s) flagged with \* Exceed NYS Regulatory Limit(s). Limit Noted.

Jennifer Araci

Test results meet the requirements of NELAC unless otherwise noted.

This report shall not be reproduced except in full, without the written approval of the laboratory.



# Laboratory Results

Results for the samples and analytes requested  
 The lab is not directly responsible for the integrity of the sample before receipt at the lab and is responsible only for the certified tests

### Sample Information:

Type: Drinking Water  
 Origin: Raw Well  
 Routine

**New York American Water - Merrick OPS**  
**60 Brooklyn Avenue**  
**Merrick, NY 11566**

**Lab No. : 70172196001**  
**Client Sample ID.: N-14347**

**Attn To : Natasha Niola**

Federal ID : 2902840

Collected : 05/07/2021 10:30 AM Point N-14347

Received : 05/07/2021 01:22 PM Location Seaman Neck #3

Collected By CLIENT

**Sample Comments:**

Samples were received outside of the recommended temperature range of 0-6 degrees Celsius. The samples were received from the field on ice and the cooling process has begun.

**RUN TO WASTE**

trans-1,3-Dichloropropene	<0.50	1	ug/L	5	05/16/2021 4:31 PM	001 VG9C1/2
Surr: 1,2-Dichlorobenzene-d4 (S)	85%	1	%REC		05/16/2021 4:31 PM	001 VG9C1/2
Surr: 4-Bromofluorobenzene (S)	100%	1	%REC		05/16/2021 4:31 PM	001 VG9C1/2

<u>Analytical Method:</u> EPA 537.1		<u>Prep Method:</u> EPA 537.1			<u>Prep Date:</u> 05/13/2021 9:28 AM		
<u>Parameter(s)</u>	<u>Results</u>	<u>Qualifier</u>	<u>D.F.</u>	<u>Units</u>	<u>Limit</u>	<u>Analyzed:</u>	<u>Container:</u>
Perfluorobutanesulfonic acid	<1.8	1		ng/L		05/16/2021 7:02 AM	001 BP3T1/2
Perfluoroheptanoic acid	<1.8	1		ng/L		05/16/2021 7:02 AM	001 BP3T1/2
Perfluorohexanesulfonic acid	<1.8	1		ng/L		05/16/2021 7:02 AM	001 BP3T1/2
Perfluorononanoic acid	<1.8	1		ng/L		05/16/2021 7:02 AM	001 BP3T1/2
Perfluorooctanesulfonic acid	<1.8	1		ng/L	10	05/16/2021 7:02 AM	001 BP3T1/2
Perfluorooctanoic acid	<1.8	1		ng/L	10	05/16/2021 7:02 AM	001 BP3T1/2
Surr: 13C2-PFDA (S)	118%	1		%REC		05/16/2021 7:02 AM	001 BP3T1/2
Surr: 13C2-PFHxA (S)	108%	1		%REC		05/16/2021 7:02 AM	001 BP3T1/2
Surr: HFPO-DAS (S)	83%	1		%REC		05/16/2021 7:02 AM	001 BP3T1/2

<u>Analytical Method:</u> SM22 9223B Colilert		<u>Prep Method:</u> SM22 9223B Colilert			<u>Prep Date:</u> 05/08/2021 8:15 AM		
<u>Parameter(s)</u>	<u>Results</u>	<u>Qualifier</u>	<u>D.F.</u>	<u>Units</u>	<u>Limit</u>	<u>Analyzed:</u>	<u>Container:</u>
E.coli	Absent		1		Absent	05/09/2021 8:15 AM	001 SP5T1/1
Total Coliforms	Absent		1		Absent	05/09/2021 8:15 AM	001 SP5T1/1

**Qualifiers:**

DF - Dilution Factor, if reported, represents the factor applied to the reported data due to changes in sample preparation, dilution of the sample aliquot, or moisture content.  
 ND - Not Detected at or above adjusted reporting limit.  
 J - Estimated concentration above the adjusted method detection limit and below the adjusted reporting limit. Estimated value - below calibration range  
 U - Indicates the compound was analyzed for, but not detected  
 See qualifiers page for additional qualifier definitions.

Jennifer Aracri

Test results meet the requirements of NELAC unless otherwise noted.

This report shall not be reproduced except in full, without the written approval of the laboratory.

Result(s) reported meet(s) NYS Regulatory Limit(s).  
 Result(s) flagged with \* Exceed NYS Regulatory Limit(s). Limit Noted.



# Laboratory Results

Results for the samples and analytes requested  
 The lab is not directly responsible for the integrity of the sample before receipt at the lab and is responsible only for the certified tests

### Sample Information:

Type: Drinking Water  
 Origin: Raw Well  
 Routine

**New York American Water - Merrick OPS**  
**60 Brooklyn Avenue**  
**Merrick, NY 11566**

**Lab No. : 70172196002**  
**Client Sample ID.: N-05767**

**Attn To :** Natasha Niola  
 Federal ID : 2902840  
 Collected : 05/07/2021 09:30 AM Point N-05767  
 Received : 05/07/2021 01:22 PM Location Demott 4 Well  
 Collected By CLIENT

**Sample Comments:**  
 RUN TO WASTE

Analytical Method:EPA 200.8

Parameter(s)	Results	Qualifier	D.F.	Units	Limit	Analyzed:	Container:
Lead	<1.0		1	ug/L	15	05/21/2021 9:51 AM	002 BP4N1/1
Thallium	<0.30		1	ug/L	2	05/21/2021 9:51 AM	002 BP4N1/1

Analytical Method:EPA 300.0

Parameter(s)	Results	Qualifier	D.F.	Units	Limit	Analyzed:	Container:
Chloride	14.0		1	mg/L	250	05/20/2021 11:24	002 BP4U1/1

Analytical Method:EPA 522

Prep Method: EPA 522

Prep Date: 05/10/2021 4:31 PM

Parameter(s)	Results	Qualifier	D.F.	Units	Limit	Analyzed:	Container:
1,4-Dioxane (p-Dioxane)	0.072		1	ug/L	1	05/12/2021 12:18	002 AG2R1/2
Surr: 1,4-Dioxane-d8 (S)	98%		1	%REC		05/12/2021 12:18	002 AG2R1/2

Analytical Method:EPA 524.2

Parameter(s)	Results	Qualifier	D.F.	Units	Limit	Analyzed:	Container:
1,1,1,2-Tetrachloroethane	<0.50		1	ug/L	5	05/17/2021 7:33 PM	002 VG9C1/2
1,1,1-Trichloroethane	<0.50		1	ug/L	5	05/17/2021 7:33 PM	002 VG9C1/2
1,1,2,2-Tetrachloroethane	<0.50		1	ug/L	5	05/17/2021 7:33 PM	002 VG9C1/2
1,1,2-Trichloroethane	<0.50		1	ug/L	5	05/17/2021 7:33 PM	002 VG9C1/2
1,1,2-Trichlorotrifluoroethane	<0.50	N3	1	ug/L	5	05/17/2021 7:33 PM	002 VG9C1/2
1,1-Dichloroethane	<0.50		1	ug/L	5	05/17/2021 7:33 PM	002 VG9C1/2
1,1-Dichloroethene	<0.50		1	ug/L	5	05/17/2021 7:33 PM	002 VG9C1/2
1,1-Dichloropropene	<0.50		1	ug/L	5	05/17/2021 7:33 PM	002 VG9C1/2
1,2,3-Trichlorobenzene	<0.50		1	ug/L	5	05/17/2021 7:33 PM	002 VG9C1/2
1,2,3-Trichloropropane	<0.50	L1	1	ug/L	5	05/17/2021 7:33 PM	002 VG9C1/2
1,2,4-Trichlorobenzene	<0.50		1	ug/L	5	05/17/2021 7:33 PM	002 VG9C1/2
1,2,4-Trimethylbenzene	<0.50		1	ug/L	5	05/17/2021 7:33 PM	002 VG9C1/2
1,2-Dichlorobenzene	<0.50		1	ug/L	5	05/17/2021 7:33 PM	002 VG9C1/2
1,2-Dichloroethane	<0.50		1	ug/L	5	05/17/2021 7:33 PM	002 VG9C1/2
1,2-Dichloropropane	<0.50		1	ug/L	5	05/17/2021 7:33 PM	002 VG9C1/2
1,3,5-Trimethylbenzene	<0.50		1	ug/L	5	05/17/2021 7:33 PM	002 VG9C1/2
1,3-Dichlorobenzene	<0.50		1	ug/L	5	05/17/2021 7:33 PM	002 VG9C1/2
1,3-Dichloropropane	<0.50		1	ug/L	5	05/17/2021 7:33 PM	002 VG9C1/2
1,4-Dichlorobenzene	<0.50		1	ug/L	5	05/17/2021 7:33 PM	002 VG9C1/2
2,2-Dichloropropane	<0.50		1	ug/L	5	05/17/2021 7:33 PM	002 VG9C1/2
2-Chlorotoluene	<0.50		1	ug/L	5	05/17/2021 7:33 PM	002 VG9C1/2
4-Chlorotoluene	<0.50		1	ug/L	5	05/17/2021 7:33 PM	002 VG9C1/2

Qualifiers:

DF - Dilution Factor, if reported, represents the factor applied to the reported data due to changes in sample preparation, dilution of the sample aliquot, or moisture content.  
 ND - Not Detected at or above adjusted reporting limit.  
 J - Estimated concentration above the adjusted method detection limit and below the adjusted reporting limit. Estimated value - below calibration range  
 U - Indicates the compound was analyzed for, but not detected  
 See qualifiers page for additional qualifier definitions.

Jennifer Aracri

Test results meet the requirements of NELAC unless otherwise noted.

This report shall not be reproduced except in full, without the written approval of the laboratory.

Result(s) reported meet(s) NYS Regulatory Limit(s).  
 Result(s) flagged with \* Exceed NYS Regulatory Limit(s). Limit Noted.



# Laboratory Results

Results for the samples and analytes requested  
 The lab is not directly responsible for the integrity of the sample before receipt at the lab and is responsible only for the certified tests

### Sample Information:

Type: Drinking Water  
 Origin: Raw Well  
 Routine

**New York American Water - Merrick OPS**  
**60 Brooklyn Avenue**  
**Merrick, NY 11566**

**Lab No. : 70172196002**  
**Client Sample ID.: N-05767**

**Attn To : Natasha Niola**

Federal ID : 2902840

Collected : 05/07/2021 09:30 AM Point N-05767

Received : 05/07/2021 01:22 PM Location Demott 4 Well

Collected By CLIENT

**Sample Comments:**

RUN TO WASTE

Benzene	<0.50	1	ug/L	5	05/17/2021 7:33 PM	002 VG9C1/2
Bromobenzene	<0.50	1	ug/L	5	05/17/2021 7:33 PM	002 VG9C1/2
Bromochloromethane	<0.50	1	ug/L	5	05/17/2021 7:33 PM	002 VG9C1/2
Bromodichloromethane	<0.50	1	ug/L		05/17/2021 7:33 PM	002 VG9C1/2
Bromoform	<0.50	1	ug/L		05/17/2021 7:33 PM	002 VG9C1/2
Bromomethane	<0.50	v3 1	ug/L	5	05/17/2021 7:33 PM	002 VG9C1/2
Carbon tetrachloride	<0.50	1	ug/L	5	05/17/2021 7:33 PM	002 VG9C1/2
Chlorobenzene	<0.50	1	ug/L	5	05/17/2021 7:33 PM	002 VG9C1/2
Chlorodifluoromethane	<0.50	N3 1	ug/L	5	05/17/2021 7:33 PM	002 VG9C1/2
Chloroethane	<0.50	1	ug/L	5	05/17/2021 7:33 PM	002 VG9C1/2
Chloroform	<0.50	1	ug/L		05/17/2021 7:33 PM	002 VG9C1/2
Chloromethane	<0.50	1	ug/L	5	05/17/2021 7:33 PM	002 VG9C1/2
Dibromochloromethane	<0.50	1	ug/L		05/17/2021 7:33 PM	002 VG9C1/2
Dibromomethane	<0.50	1	ug/L	5	05/17/2021 7:33 PM	002 VG9C1/2
Dichlorodifluoromethane	<0.50	1	ug/L	5	05/17/2021 7:33 PM	002 VG9C1/2
Ethylbenzene	<0.50	1	ug/L	5	05/17/2021 7:33 PM	002 VG9C1/2
Hexachloro-1,3-butadiene	<0.50	1	ug/L	5	05/17/2021 7:33 PM	002 VG9C1/2
Isopropylbenzene (Cumene)	<0.50	1	ug/L	5	05/17/2021 7:33 PM	002 VG9C1/2
Methyl-tert-butyl ether	<0.50	L1 1	ug/L	10	05/17/2021 7:33 PM	002 VG9C1/2
Methylene Chloride	<0.50	1	ug/L	5	05/17/2021 7:33 PM	002 VG9C1/2
Styrene	<0.50	1	ug/L	5	05/17/2021 7:33 PM	002 VG9C1/2
Tetrachloroethene	<0.50	1	ug/L	5	05/17/2021 7:33 PM	002 VG9C1/2
Toluene	<0.50	1	ug/L	5	05/17/2021 7:33 PM	002 VG9C1/2
Total Trihalomethanes (Calc.)	<0.50	1	ug/L	80	05/17/2021 7:33 PM	002 VG9C1/2
Trichloroethene	<0.50	1	ug/L	5	05/17/2021 7:33 PM	002 VG9C1/2
Trichlorofluoromethane	<0.50	1	ug/L	5	05/17/2021 7:33 PM	002 VG9C1/2
Vinyl chloride	<0.50	1	ug/L	2	05/17/2021 7:33 PM	002 VG9C1/2
cis-1,2-Dichloroethene	<0.50	1	ug/L	5	05/17/2021 7:33 PM	002 VG9C1/2
cis-1,3-Dichloropropene	<0.50	1	ug/L	5	05/17/2021 7:33 PM	002 VG9C1/2
m&p-Xylene	<0.50	1	ug/L	5	05/17/2021 7:33 PM	002 VG9C1/2
n-Butylbenzene	<0.50	1	ug/L	5	05/17/2021 7:33 PM	002 VG9C1/2
n-Propylbenzene	<0.50	1	ug/L	5	05/17/2021 7:33 PM	002 VG9C1/2
o-Xylene	<0.50	1	ug/L	5	05/17/2021 7:33 PM	002 VG9C1/2
p-Isopropyltoluene	<0.50	1	ug/L	5	05/17/2021 7:33 PM	002 VG9C1/2
sec-Butylbenzene	<0.50	1	ug/L	5	05/17/2021 7:33 PM	002 VG9C1/2
tert-Butylbenzene	<0.50	1	ug/L	5	05/17/2021 7:33 PM	002 VG9C1/2
trans-1,2-Dichloroethene	<0.50	1	ug/L	5	05/17/2021 7:33 PM	002 VG9C1/2
trans-1,3-Dichloropropene	<0.50	1	ug/L	5	05/17/2021 7:33 PM	002 VG9C1/2
Surr: 1,2-Dichlorobenzene-d4 (S)	89%	1	%REC		05/17/2021 7:33 PM	002 VG9C1/2
Surr: 4-Bromofluorobenzene (S)	102%	1	%REC		05/17/2021 7:33 PM	002 VG9C1/2

**Qualifiers:**

DF - Dilution Factor, if reported, represents the factor applied to the reported data due to changes in sample preparation, dilution of the sample aliquot, or moisture content.

ND - Not Detected at or above adjusted reporting limit.

J - Estimated concentration above the adjusted method detection limit and below the adjusted reporting limit. Estimated value - below calibration range

U - Indicates the compound was analyzed for, but not detected

See qualifiers page for additional qualifier definitions.

Result(s) reported meet(s) NYS Regulatory Limit(s).

Result(s) flagged with \* Exceed NYS Regulatory Limit(s). Limit Noted.

Jennifer Aracri

Test results meet the requirements of NELAC unless otherwise noted.

This report shall not be reproduced except in full, without the written approval of the laboratory.



# Laboratory Results

Results for the samples and analytes requested  
 The lab is not directly responsible for the integrity of the sample before receipt at the lab and is responsible only for the certified tests

### Sample Information:

Type: Drinking Water  
 Origin: Raw Well  
 Routine

**New York American Water - Merrick OPS**  
**60 Brooklyn Avenue**  
**Merrick, NY 11566**

**Lab No. : 70172196002**  
**Client Sample ID.: N-05767**

**Attn To :** Natasha Niola  
 Federal ID : 2902840  
 Collected : 05/07/2021 09:30 AM Point N-05767  
 Received : 05/07/2021 01:22 PM Location Demott 4 Well  
 Collected By CLIENT

**Sample Comments:**  
 RUN TO WASTE

Analytical Method: EPA 537.1		Prep Method: EPA 537.1			Prep Date: 05/13/2021 9:28 AM		
Parameter(s)	Results	Qualifier	D.F.	Units	Limit	Analyzed:	Container:
Perfluorobutanesulfonic acid	<1.8		1	ng/L		05/16/2021 6:44 AM	002 BP3T1/2
Perfluoroheptanoic acid	<1.8		1	ng/L		05/16/2021 6:44 AM	002 BP3T1/2
Perfluorohexanesulfonic acid	<1.8		1	ng/L		05/16/2021 6:44 AM	002 BP3T1/2
Perfluorononanoic acid	<1.8		1	ng/L		05/16/2021 6:44 AM	002 BP3T1/2
Perfluorooctanesulfonic acid	<1.8		1	ng/L	10	05/16/2021 6:44 AM	002 BP3T1/2
Perfluorooctanoic acid	<1.8		1	ng/L	10	05/16/2021 6:44 AM	002 BP3T1/2
Surr: 13C2-PFDA (S)	118%		1	%REC		05/16/2021 6:44 AM	002 BP3T1/2
Surr: 13C2-PFHxA (S)	108%		1	%REC		05/16/2021 6:44 AM	002 BP3T1/2
Surr: HFPO-DAS (S)	86%		1	%REC		05/16/2021 6:44 AM	002 BP3T1/2

Analytical Method: SM22 9223B Colilert		Prep Method: SM22 9223B Colilert			Prep Date: 05/08/2021 8:15 AM		
Parameter(s)	Results	Qualifier	D.F.	Units	Limit	Analyzed:	Container:
E.coli	Absent		1		Absent	05/09/2021 8:15 AM	002 SP5T1/1
Total Coliforms	Absent		1		Absent	05/09/2021 8:15 AM	002 SP5T1/1

**Qualifiers:**

DF - Dilution Factor, if reported, represents the factor applied to the reported data due to changes in sample preparation, dilution of the sample aliquot, or moisture content.  
 ND - Not Detected at or above adjusted reporting limit.  
 J - Estimated concentration above the adjusted method detection limit and below the adjusted reporting limit. Estimated value - below calibration range  
 U - Indicates the compound was analyzed for, but not detected  
 See qualifiers page for additional qualifier definitions.

Jennifer Aracri

Test results meet the requirements of NELAC unless otherwise noted.

This report shall not be reproduced except in full, without the written approval of the laboratory.

Result(s) reported meet(s) NYS Regulatory Limit(s).  
 Result(s) flagged with \* Exceed NYS Regulatory Limit(s). Limit Noted.



575 Broad Hollow Road, Melville, NY 11747  
 TEL: (631) 694-3040 FAX: (631) 420-8436  
[www.pacelabs.com](http://www.pacelabs.com)

# Laboratory Results

Results for the samples and analytes requested  
 The lab is not directly responsible for the integrity of the sample before receipt at the lab and is responsible only for the certified tests

**Sample Information:**

Type: Drinking Water  
 Origin: Raw Well  
 Routine

**New York American Water - Merrick OPS**  
**60 Brooklyn Avenue**  
**Merrick, NY 11566**

**Lab No. : 70172196003**  
**Client Sample ID.: N-08253**

**Attn To :** Natasha Niola  
 Federal ID : 2902840  
 Collected : 05/07/2021 11:15 AM Point N-08253  
 Received : 05/07/2021 01:22 PM Location Jefferson 12 Well  
 Collected By CLIENT

**Sample Comments:**  
 RUN TO WASTE

<u>Analytical Method:</u> EPA 522		<u>Prep Method:</u> EPA 522			<u>Prep Date:</u> 05/10/2021 4:31 PM		
<u>Parameter(s)</u>	<u>Results</u>	<u>Qualifier</u>	<u>D.F.</u>	<u>Units</u>	<u>Limit</u>	<u>Analyzed:</u>	<u>Container:</u>
1,4-Dioxane (p-Dioxane)	0.022		1	ug/L	1	05/12/2021 12:58	003 AG2R1/2
Surr: 1,4-Dioxane-d8 (S)	98%		1	%REC		05/12/2021 12:58	003 AG2R1/2

Qualifiers:

DF - Dilution Factor, if reported, represents the factor applied to the reported data due to changes in sample preparation, dilution of the sample aliquot, or moisture content.  
 ND - Not Detected at or above adjusted reporting limit.  
 J - Estimated concentration above the adjusted method detection limit and below the adjusted reporting limit. Estimated value - below calibration range  
 U - Indicates the compound was analyzed for, but not detected

Jennifer Aracri

Test results meet the requirements of NELAC unless otherwise noted.

This report shall not be reproduced except in full, without the written approval of the laboratory.

Result(s) reported meet(s) NYS Regulatory Limit(s).  
 Result(s) flagged with \* Exceed NYS Regulatory Limit(s). Limit Noted.

Date Reported: 05/21/2021



**WorkOrder :**

70172196

## Laboratory Certifications

---

**Pace Analytical Services Ormond Beach**

8 East Tower Circle, Ormond Beach, FL 32174  
Alaska DEC- CS/UST/LUST  
Alabama Certification #: 41320  
Arizona Certification# AZ0819  
Colorado Certification: FL NELAC Reciprocity  
Connecticut Certification #: PH-0216  
Delaware Certification: FL NELAC Reciprocity  
Florida Certification #: E83079  
Georgia Certification #: 955  
Guam Certification: FL NELAC Reciprocity  
Hawaii Certification: FL NELAC Reciprocity  
Illinois Certification #: 200068  
Indiana Certification: FL NELAC Reciprocity  
Kansas Certification #: E-10383  
Kentucky Certification #: 90050  
Louisiana Certification #: FL NELAC Reciprocity  
Louisiana Environmental Certificate #: 05007  
Maryland Certification: #346  
Michigan Certification #: 9911  
Mississippi Certification: FL NELAC Reciprocity  
Missouri Certification #: 236  
Montana Certification #: Cert 0074  
Nebraska Certification: NE-OS-28-14  
New Hampshire Certification #: 2958  
New Jersey Certification #: FL022  
New York Certification #: 11608  
North Carolina Environmental Certificate #: 667  
North Carolina Certification #: 12710  
North Dakota Certification #: R-216  
Ohio DEP 87780  
Oklahoma Certification #: D9947  
Pennsylvania Certification #: 68-00547  
Puerto Rico Certification #: FL01264  
South Carolina Certification: #96042001  
Tennessee Certification #: TN02974  
Texas Certification: FL NELAC Reciprocity  
US Virgin Islands Certification: FL NELAC Reciprocity  
Virginia Environmental Certification #: 460165  
West Virginia Certification #: 9962C  
Wisconsin Certification #: 399079670  
Wyoming (EPA Region 8): FL NELAC Reciprocity

**Pace Analytical Services Long Island**

**WorkOrder :**

70172196

## Laboratory Certifications

---

**Pace Analytical Services Long Island**

Delaware Certification # NY10478

Virginia Certification # 460302

575 Broad Hollow Rd, Melville, NY 11747

New York Certification #: 10478 Primary Accrediting Body

New Jersey Certification #: NY158

Pennsylvania Certification #: 68-00350

Connecticut Certification #: PH-0435

Maryland Certification #: 208

Rhode Island Certification #: LAO00340

Massachusetts Certification #: M-NY026

New Hampshire Certification #: 2987

**WorkOrder :**

70172196

**Additional Qualifiers**

---

D6 - The precision between the sample and sample duplicate exceeded laboratory control limits.

L1 - Analyte recovery in the laboratory control sample (LCS) was above QC limits. Results for this analyte in associated samples may be biased high.

N3 - Accreditation is not offered by the relevant laboratory accrediting body for this parameter.

v3 - The continuing calibration verification was below the method acceptance limit. Any detection for the analyte in the associated samples may have a low bias.

WO#: 70172196



70172196

(031) 074 0000

# Sample Request Form PUBLIC WATER SUPPLIER

WELL OFF LINE

WELL RUN TO SYSTEM

YES  NO VOC'S PRESERVED WITH HCl

Date: 5/7/21

Collected By: Johnburg

Accepted By: Mary

Cooler Temp: 12.5 °C

### Client Info:

Name or Code: New York American water

Address: 60 Brooklyn Ave

Merrick N.Y. 11566

Phone #: 516 233 4325

Attn: Johnburg

Proj. # or (Name): Merrick 05202840

Bill To: Merrick 05202840

Copies To: \_\_\_\_\_

Sample Types	Purpose	Origin	Treatment Types
PW - Potable Water	RO - Routine	D - Distribution	AST - Air Stripper
GW - Groundwater	RE - Resample	RW - Raw Well	GAC - Granular Activated Charcoal
SW - Surface Water	S - Special	TW - Treated Well	N - Nitrate Removal Plant
WW - Waste Water		T - Tank	FE - Iron Removal Plant
AQ - Aqueous		MW - Monitoring Well	O - Other
S - Soil		I - Influent	
		E - Effluent	

### Sample Info:

Date/Time Collected:	Sample Type	Location	Origin	Treatment Type	Purpose	Field Readings Cl <sub>2</sub>	pH/Temp	Analysis	Lab No.
5/7 1030	PW	N-14347 sm3	RW		RO			POCS/POCS	welloffline.com
930	PW	N-05767 perm44	RW		RO			POCS/POCS	welloffline.com
845	PW	GAC 35/45	RW		RO			POCS/POCS	Run to system
830	PW	N-09338	RW		RO			POCS/POCS	Run to system

Remarks:



**Pace Analytical®**  
www.pacelabs.com

575 Broad Hollow Rd., Melville, NY 11747  
(631) 694-3040 Fax: (631) 420-8436

# Sample Request Form

## PUBLIC WATER SUPPLIER

WELL OFF LINE

WELL RUN TO SYSTEM

YES  NO VOC'S PRESERVED WITH HCl

Date:

5/7/21

Collected By:

John Dunn

Accepted By:

Mary J

Cooler Temp:

12.5°C 517/21  
1322

**Client Info:**

Name or Code: New York American Water  
Address: 64 Brooklyn Ave  
Merrick NY 11566  
Phone #: 516 233 4325  
Attn: John Dunn  
Proj. # or (Name):  
Bill To: Merrick OPS 2902840  
Copies To:

Sample Types	Purpose	Origin	Treatment Types
PW - Potable Water	RO - Routine	D - Distribution	AST - Air Stripper
GW - Groundwater	RE - Resample	RW - Raw Well	GAC - Granular Activated Charcoal
SW - Surface Water	S - Special	TW - Treated Well	N - Nitrate Removal Plant
WW - Waste Water		T - Tank	FE - Iron Removal Plant
AQ - Aqueous		MW - Monitoring Well	O - Other
S - Soil		I - Influent	
		E - Effluent	

**Sample Info:**

Date/Time Collected:	Sample Type	Location	Origin	Treatment Type	Purpose	Field Readings Cl <sub>2</sub>	pH/Temp	Analysis	Lab No.
5/7 1030	PW	N-14347	SU3	RW	RO			BACT.	well off line 001
5/7 930	PW	N-05767	Demo#4	RW	RO			BACT.	well off line 001

Remarks:



# Sample Request Form PUBLIC WATER SUPPLIER

WELL OFF LINE

WELL RUN TO SYSTEM

YES  NO VOC'S PRESERVED WITH HCl

Date: 5/17/21  
Collected By: John Dunn  
Accepted By: Murray  
Cooler Temp: 12.5 °C  
577/21  
1322

**Client Info:**  
Name or Code: New York American water  
Address: 60 Breaklyn Ave  
Merrick N.Y. 11566  
Phone #: 516 233 4325  
Attn: John Dunn  
Proj. # or (Name): Merrick ops 2902840  
Bill To: Merrick ops 2902840  
Copies To: \_\_\_\_\_

Sample Types	Purpose	Origin	Treatment Types
PW - Potable Water	RO - Routine	D - Distribution	AST - Air Stripper
GW - Groundwater	RE - Resample	RW - Raw Well	GAC - Granular Activated Charcoal
SW - Surface Water	S - Special	TW - Treated Well	N - Nitrate Removal Plant
WW - Waste Water		T - Tank	FE - Iron Removal Plant
AQ - Aqueous		MW - Monitoring Well	O - Other
S - Soil		I - Influent	
		E - Effluent	

**Sample Info:**

Date/Time Collected:	Sample Type	Location	Origin	Treatment Type	Purpose	Field Readings Cl <sub>2</sub> pH/Temp	Analysis	Lab No.
5/17 1030	RW	N-14347 SW3	RW		RO		chlorides	welloffline
930	PW	N-05767 permeth	RW		RO		chlorides	welloffline

Remarks:



Pace Analytical<sup>®</sup>  
www.pacelabs.com

575 Broad Hollow Rd., Melville, NY 11747  
(631) 694-3040 Fax: (631) 420-8436

# Sample Request Form PUBLIC WATER SUPPLIER

WELL OFF LINE

WELL RUN TO SYSTEM

YES  NO VOC'S PRESERVED WITH HCl

Date: 5/7/21

Collected By: John Dunn

Accepted By: Mary R

Cooler Temp: 12.5°C 517121  
1322

**Client Info:**

Name or Code: New York American water

Address: 60 Brooklyn Ave

Merrick NY 11566

Phone #: 516-233-4325

Attn: John Dunn

Proj. # or (Name):

Bill To: Merrick OPS 2908840

Copies To:

Sample Types	Purpose	Origin	Treatment Types
PW - Potable Water	RO - Routine	D - Distribution	AST - Air Stripper
GW - Groundwater	RE - Resample	RW - Raw Well	GAC - Granular Activated Charcoal
SW - Surface Water	S - Special	TW - Treated Well	N - Nitrate Removal Plant
WW - Waste Water		T - Tank	FE - Iron Removal Plant
AQ - Aqueous		MW - Monitoring Well	O - Other
S - Soil		I - Influent	
		E - Effluent	

**Sample Info:**

Date/Time Collected:	Sample Type	Location	Origin	Treatment Type	Purpose	Field Readings Cl <sub>2</sub> pH/Temp	Analysis	Lab No.
5/7 1030	PW	N-14347 SN3	RW		RO		PFAS compounds	well off line cool
5/7 930	PW	N-05767 DN014	RW		RO		PFAS compounds	well off line cool
Remarks:								



Pace Analytical®  
www.pacelabs.com

575 Broad Hollow Rd., Melville, NY 11747  
(631) 694-3040 Fax: (631) 420-8436

### Sample Request Form PUBLIC WATER SUPPLIER

WELL OFF LINE

Date: 5/7/21

Collected By: John Dunn ③

Accepted By: Mary R

Cooler Temp: 12.5 57/21  
1322

WELL RUN TO SYSTEM

YES  NO VOC'S PRESERVED WITH HCI

**Client Info:**

Name or Code: New York American water  
Address: 60 Brookline Ave  
Merrick N.J. 07566  
Phone #: 516 23 9433  
Attn: John Dunn  
Proj. # or (Name):  
Bill To: Merrick Ops 2902840  
Copies To:

Sample Types	Purpose	Origin	Treatment Types
PW - Potable Water	RO - Routine	D - Distribution	AST - Air Stripper
GW - Groundwater	RE - Resample	RW - Raw Well	GAC - Granular Activated Charcoal
SW - Surface Water	S - Special	TW - Treated Well	N - Nitrate Removal Plant
WW - Waste Water		T - Tank	FE - Iron Removal Plant
AQ - Aqueous		MW - Monitoring Well	O - Other
S - Soil		I - Influent	
		E - Effluent	

**Sample Info:**

Date/Time Collected:	Sample Type	Location	Origin	Treatment Type	Purpose	Field Readings Cl <sub>2</sub> pH/Temp	Analysis	Lab No.
5/7 730	PW	N-09878	RW		RO		Thallium+Lead	Run to system
800	PW	N-10195	RW		RO		Thallium+Lead	Run to system
830	PW	N-09338	RW		RO		''	Run to system
845	PW	GAC35/45	<del>RW</del>	GAC	RO	7.1	''	to system
930	PW	N05767	RW		RO		''	well off line 002
1030	PW	N-14347	RW		RO		''	well off line 001
Remarks:								







# Sample Condition Upon Receipt

## WO#: 70172196

Client Name: NVAW - Merrick

Project

PM: JSA

Due Date: 05/18/21

CLIENT: NYAW

Courier:  Fed Ex  UPS  USPS  Client  Commercial  Pace  Other

Tracking #: \_\_\_\_\_

Custody Seal on Cooler/Box Present:  Yes  No Seals intact:  Yes  NoPacking Material:  Bubble Wrap  Bubble Bags  Ziploc  None  Other

Thermometer Used: TH091

Correction Factor: +0.0Cooler Temperature(°C): 12.5Cooler Temperature Corrected(°C): 12.5

Temp should be above freezing to 6.0°C

USDA Regulated Soil (  N/A, water sample)Date and Initials of person examining contents: MSS/7/20Did samples originate in a quarantine zone within the United States: AL, AR, CA, FL, GA, ID, LA, MS, NC, NM, NY, OK, OR, SC, TN, TX, or VA (check map)?  Yes  NoDid samples originate from a foreign source including Hawaii and Puerto Rico)?  Yes  No

If Yes to either question, fill out a Regulated Soil Checklist (F-LI-C-010) and include with SCUR/COC paperwork.

		COMMENTS:
Chain of Custody Present:	<input checked="" type="checkbox"/> Yes <input type="checkbox"/> No	1.
Chain of Custody Filled Out:	<input checked="" type="checkbox"/> Yes <input type="checkbox"/> No	2.
Chain of Custody Relinquished:	<input checked="" type="checkbox"/> Yes <input type="checkbox"/> No	3.
Sampler Name & Signature on COC:	<input checked="" type="checkbox"/> Yes <input type="checkbox"/> No <input type="checkbox"/> N/A	4.
Samples Arrived within Hold Time:	<input checked="" type="checkbox"/> Yes <input type="checkbox"/> No	5.
Short Hold Time Analysis (<72hr):	<input checked="" type="checkbox"/> Yes <input type="checkbox"/> No	6.
Rush Turn Around Time Requested:	<input type="checkbox"/> Yes <input checked="" type="checkbox"/> No	7.
Sufficient Volume: (Triple volume provided for)	<input checked="" type="checkbox"/> Yes <input type="checkbox"/> No	8.
Correct Containers Used:	<input checked="" type="checkbox"/> Yes <input type="checkbox"/> No	9.
-Pace Containers Used:	<input type="checkbox"/> Yes <input type="checkbox"/> No	10.
Containers Intact:	<input checked="" type="checkbox"/> Yes <input type="checkbox"/> No	11.
Filtered volume received for Dissolved tests	<input type="checkbox"/> Yes <input type="checkbox"/> No <input checked="" type="checkbox"/> N/A	11. Note if sediment is visible in the dissolved container.
Sample Labels match COC:	<input checked="" type="checkbox"/> Yes <input type="checkbox"/> No	12. Received 1-4 Dioxane for Sample N-05767
-Includes date/time/ID, Matrix: SL (WT) OIL		13. <input type="checkbox"/> HNO <sub>3</sub> <input type="checkbox"/> H <sub>2</sub> SO <sub>4</sub> <input type="checkbox"/> NaOH <input type="checkbox"/> HCl
All containers needing preservation have been checked?	<input checked="" type="checkbox"/> Yes <input type="checkbox"/> No <input type="checkbox"/> N/A	Sample #
pH paper Lot # <u>HC 148594</u>		Initial when completed: _____ Lot # of added preservative: _____ Date/Time preservative added: _____
All containers needing preservation are found to be in compliance with method recommendation? (HNO <sub>3</sub> , H <sub>2</sub> SO <sub>4</sub> , HCl, NaOH>9 Sulfide, NaOH>12 Cyanide)	<input checked="" type="checkbox"/> Yes <input type="checkbox"/> No <input type="checkbox"/> N/A	14. Positive for Res. Chlorine? Y N
Exceptions: VOA, Coliform, TOC/DOC, Oil and Grease, DRO/8015 (water).		
Per Method, VOA pH is checked after analysis		
Samples checked for dechlorination:	<input type="checkbox"/> Yes <input type="checkbox"/> No <input checked="" type="checkbox"/> N/A	15.
KI starch test strips Lot #		
Residual chlorine strips Lot #		
SM 4500 CN samples checked for sulfide?	<input type="checkbox"/> Yes <input type="checkbox"/> No <input checked="" type="checkbox"/> N/A	16.
Lead Acetate Strips Lot #		
Headspace in VOA Vials (>6mm):	<input type="checkbox"/> Yes <input checked="" type="checkbox"/> No <input type="checkbox"/> N/A	17.
Trip Blank Present:	<input type="checkbox"/> Yes <input checked="" type="checkbox"/> No <input type="checkbox"/> N/A	
Trip Blank Custody Seals Present	<input type="checkbox"/> Yes <input type="checkbox"/> No <input checked="" type="checkbox"/> N/A	
Pace Trip Blank Lot # (if applicable): _____		

Client Notification/ Resolution:

Field Data Required? Y / N

Person Contacted: \_\_\_\_\_

Date/Time: \_\_\_\_\_

Comments/ Resolution: \_\_\_\_\_



# Laboratory Results

Results for the samples and analytes requested  
 The lab is not directly responsible for the integrity of the sample before receipt at the lab and is responsible only for the certified tests

### Sample Information:

Type: Drinking Water  
 Origin: Raw Well  
 Routine

**New York American Water - Merrick OPS**  
**60 Brooklyn Avenue**  
**Merrick, NY 11566**

**Lab No. : 70169342001**  
**Client Sample ID.: GAC-3S/4S**

**Attn To :** Natasha Niola  
 Federal ID : 2902840  
 Collected : 04/15/2021 08:35 AM Point GAC-3S/4S  
 Received : 04/15/2021 01:27 PM Location Seamanneck Wells 3/4  
 Collected By CLIENT

**Sample Comments:**

Samples were received outside of the recommended temperature range of 0-6 degrees Celsius. The samples were received from the field on ice and the cooling process has begun.

Analytical Method: EPA 537.1		Prep Method: EPA 537.1			Prep Date: 04/19/2021 9:41 AM		
Parameter(s)	Results	Qualifier	D.F.	Units	Limit	Analyzed:	Container:
Perfluorobutanesulfonic acid	<1.9		1	ng/L		04/21/2021 4:18 AM	001 BP3T1/2
Perfluoroheptanoic acid	<1.9		1	ng/L		04/21/2021 4:18 AM	001 BP3T1/2
Perfluorohexanesulfonic acid	<1.9		1	ng/L		04/21/2021 4:18 AM	001 BP3T1/2
Perfluorononanoic acid	<1.9		1	ng/L		04/21/2021 4:18 AM	001 BP3T1/2
Perfluorooctanesulfonic acid	<1.9		1	ng/L	10	04/21/2021 4:18 AM	001 BP3T1/2
Perfluorooctanoic acid	<1.9		1	ng/L	10	04/21/2021 4:18 AM	001 BP3T1/2
Surr: 13C2-PFDA (S)	119%		1	%REC		04/21/2021 4:18 AM	001 BP3T1/2
Surr: 13C2-PFHxA (S)	91%		1	%REC		04/21/2021 4:18 AM	001 BP3T1/2
Surr: HFPO-DAS (S)	82%		1	%REC		04/21/2021 4:18 AM	001 BP3T1/2

**Qualifiers:**

DF - Dilution Factor, if reported, represents the factor applied to the reported data due to changes in sample preparation, dilution of the sample aliquot, or moisture content.  
 ND - Not Detected at or above adjusted reporting limit.  
 J - Estimated concentration above the adjusted method detection limit and below the adjusted reporting limit. Estimated value - below calibration range  
 U - Indicates the compound was analyzed for, but not detected

Jennifer Aracri

Test results meet the requirements of NELAC unless otherwise noted.

This report shall not be reproduced except in full, without the written approval of the laboratory.

Result(s) reported meet(s) NYS Regulatory Limit(s).  
 Result(s) flagged with \* Exceed NYS Regulatory Limit(s). Limit Noted.

Date Reported: 04/22/2021



# Laboratory Results

Results for the samples and analytes requested  
 The lab is not directly responsible for the integrity of the sample before receipt at the lab and is responsible only for the certified tests

### Sample Information:

Type: Drinking Water  
 Origin: Raw Well  
 Routine

**New York American Water - Merrick OPS**  
**60 Brooklyn Avenue**  
**Merrick, NY 11566**

**Lab No. : 70169342002**  
**Client Sample ID.: N-09338**

**Attn To :** Natasha Niola  
 Federal ID : 2902840  
 Collected : 04/15/2021 09:00 AM Point N-09338  
 Received : 04/15/2021 01:27 PM Location Seamanneck 4 Well  
 Collected By CLIENT

Analytical Method: EPA 537.1		Prep Method: EPA 537.1			Prep Date: 04/19/2021 9:41 AM		
Parameter(s)	Results	Qualifier	D.F.	Units	Limit	Analyzed:	Container:
Perfluorobutanesulfonic acid	<1.9		1	ng/L		04/21/2021 4:49 AM	002 BP3T1/2
Perfluoroheptanoic acid	<1.9		1	ng/L		04/21/2021 4:49 AM	002 BP3T1/2
Perfluorohexanesulfonic acid	<1.9		1	ng/L		04/21/2021 4:49 AM	002 BP3T1/2
Perfluorononanoic acid	<1.9		1	ng/L		04/21/2021 4:49 AM	002 BP3T1/2
Perfluorooctanesulfonic acid	<1.9		1	ng/L	10	04/21/2021 4:49 AM	002 BP3T1/2
Perfluorooctanoic acid	<1.9		1	ng/L	10	04/21/2021 4:49 AM	002 BP3T1/2
Surr: 13C2-PFDA (S)	120%		1	%REC		04/21/2021 4:49 AM	002 BP3T1/2
Surr: 13C2-PFHxA (S)	99%		1	%REC		04/21/2021 4:49 AM	002 BP3T1/2
Surr: HFPO-DAS (S)	97%		1	%REC		04/21/2021 4:49 AM	002 BP3T1/2

**Qualifiers:**

DF - Dilution Factor, if reported, represents the factor applied to the reported data due to changes in sample preparation, dilution of the sample aliquot, or moisture content.  
 ND - Not Detected at or above adjusted reporting limit.  
 J - Estimated concentration above the adjusted method detection limit and below the adjusted reporting limit. Estimated value - below calibration range  
 U - Indicates the compound was analyzed for, but not detected

Jennifer Aracri

Test results meet the requirements of NELAC unless otherwise noted.

This report shall not be reproduced except in full, without the written approval of the laboratory.

Result(s) reported meet(s) NYS Regulatory Limit(s).  
 Result(s) flagged with \* Exceed NYS Regulatory Limit(s). Limit Noted.

Date Reported: 04/22/2021



# Laboratory Results

Results for the samples and analytes requested  
 The lab is not directly responsible for the integrity of the sample before receipt at the lab and is responsible only for the certified tests

### Sample Information:

Type: Drinking Water  
 Origin: Raw Well  
 Routine

**New York American Water - Merrick OPS**  
**60 Brooklyn Avenue**  
**Merrick, NY 11566**

**Lab No. : 70169342003**  
**Client Sample ID.: N-10195**

**Attn To :** Natasha Niola  
 Federal ID : 2902840  
 Collected : 04/15/2021 10:00 AM Point N-10195  
 Received : 04/15/2021 01:27 PM Location Jerusalem 5 Well  
 Collected By CLIENT

Analytical Method: EPA 537.1		Prep Method: EPA 537.1			Prep Date: 04/19/2021 9:41 AM		
Parameter(s)	Results	Qualifier	D.F.	Units	Limit	Analyzed:	Container:
Perfluorobutanesulfonic acid	<1.8		1	ng/L		04/21/2021 5:05 AM	003 BP3T1/2
Perfluoroheptanoic acid	<1.8		1	ng/L		04/21/2021 5:05 AM	003 BP3T1/2
Perfluorohexanesulfonic acid	<1.8		1	ng/L		04/21/2021 5:05 AM	003 BP3T1/2
Perfluorononanoic acid	<1.8		1	ng/L		04/21/2021 5:05 AM	003 BP3T1/2
Perfluorooctanesulfonic acid	<1.8		1	ng/L	10	04/21/2021 5:05 AM	003 BP3T1/2
Perfluorooctanoic acid	<1.8		1	ng/L	10	04/21/2021 5:05 AM	003 BP3T1/2
Surr: 13C2-PFDA (S)	74%		1	%REC		04/21/2021 5:05 AM	003 BP3T1/2
Surr: 13C2-PFHxA (S)	92%		1	%REC		04/21/2021 5:05 AM	003 BP3T1/2
Surr: HFPO-DAS (S)	83%		1	%REC		04/21/2021 5:05 AM	003 BP3T1/2

**Qualifiers:**

DF - Dilution Factor, if reported, represents the factor applied to the reported data due to changes in sample preparation, dilution of the sample aliquot, or moisture content.  
 ND - Not Detected at or above adjusted reporting limit.  
 J - Estimated concentration above the adjusted method detection limit and below the adjusted reporting limit. Estimated value - below calibration range  
 U - Indicates the compound was analyzed for, but not detected

Jennifer Aracri

Test results meet the requirements of NELAC unless otherwise noted.

This report shall not be reproduced except in full, without the written approval of the laboratory.

Result(s) reported meet(s) NYS Regulatory Limit(s).  
 Result(s) flagged with \* Exceed NYS Regulatory Limit(s). Limit Noted.

Date Reported: 04/22/2021



# Laboratory Results

Results for the samples and analytes requested  
 The lab is not directly responsible for the integrity of the sample before receipt at the lab and is responsible only for the certified tests

### Sample Information:

Type: Drinking Water  
 Origin: Raw Well  
 Routine

**New York American Water - Merrick OPS**  
**60 Brooklyn Avenue**  
**Merrick, NY 11566**

**Lab No. : 70169342004**  
**Client Sample ID.: N-09878**

**Attn To :** Natasha Niola  
 Federal ID : 2902840  
 Collected : 04/15/2021 10:50 AM Point N-09878  
 Received : 04/15/2021 01:27 PM Location Newbridge 4 Well  
 Collected By CLIENT

Analytical Method: EPA 537.1		Prep Method: EPA 537.1			Prep Date: 04/19/2021 9:41 AM		
Parameter(s)	Results	Qualifier	D.F.	Units	Limit	Analyzed:	Container:
Perfluorobutanesulfonic acid	<1.9		1	ng/L		04/21/2021 5:20 AM	004 BP3T1/2
Perfluoroheptanoic acid	<1.9		1	ng/L		04/21/2021 5:20 AM	004 BP3T1/2
Perfluorohexanesulfonic acid	<1.9		1	ng/L		04/21/2021 5:20 AM	004 BP3T1/2
Perfluorononanoic acid	<1.9		1	ng/L		04/21/2021 5:20 AM	004 BP3T1/2
Perfluorooctanesulfonic acid	<1.9		1	ng/L	10	04/21/2021 5:20 AM	004 BP3T1/2
Perfluorooctanoic acid	<1.9		1	ng/L	10	04/21/2021 5:20 AM	004 BP3T1/2
Surr: 13C2-PFDA (S)	114%		1	%REC		04/21/2021 5:20 AM	004 BP3T1/2
Surr: 13C2-PFHxA (S)	93%		1	%REC		04/21/2021 5:20 AM	004 BP3T1/2
Surr: HFPO-DAS (S)	86%		1	%REC		04/21/2021 5:20 AM	004 BP3T1/2

**Qualifiers:**

DF - Dilution Factor, if reported, represents the factor applied to the reported data due to changes in sample preparation, dilution of the sample aliquot, or moisture content.  
 ND - Not Detected at or above adjusted reporting limit.  
 J - Estimated concentration above the adjusted method detection limit and below the adjusted reporting limit. Estimated value - below calibration range  
 U - Indicates the compound was analyzed for, but not detected

Jennifer Aracri

Test results meet the requirements of NELAC unless otherwise noted.

This report shall not be reproduced except in full, without the written approval of the laboratory.

Result(s) reported meet(s) NYS Regulatory Limit(s).  
 Result(s) flagged with \* Exceed NYS Regulatory Limit(s). Limit Noted.

Date Reported: 04/22/2021

**WorkOrder :**

70169342

## Laboratory Certifications

---

**Pace Analytical Services Ormond Beach**

8 East Tower Circle, Ormond Beach, FL 32174  
Alaska DEC- CS/UST/LUST  
Alabama Certification #: 41320  
Arizona Certification# AZ0819  
Colorado Certification: FL NELAC Reciprocity  
Connecticut Certification #: PH-0216  
Delaware Certification: FL NELAC Reciprocity  
Florida Certification #: E83079  
Georgia Certification #: 955  
Guam Certification: FL NELAC Reciprocity  
Hawaii Certification: FL NELAC Reciprocity  
Illinois Certification #: 200068  
Indiana Certification: FL NELAC Reciprocity  
Kansas Certification #: E-10383  
Kentucky Certification #: 90050  
Louisiana Certification #: FL NELAC Reciprocity  
Louisiana Environmental Certificate #: 05007  
Maryland Certification: #346  
Michigan Certification #: 9911  
Mississippi Certification: FL NELAC Reciprocity  
Missouri Certification #: 236  
Montana Certification #: Cert 0074  
Nebraska Certification: NE-OS-28-14  
New Hampshire Certification #: 2958  
New Jersey Certification #: FL022  
New York Certification #: 11608  
North Carolina Environmental Certificate #: 667  
North Carolina Certification #: 12710  
North Dakota Certification #: R-216  
Ohio DEP 87780  
Oklahoma Certification #: D9947  
Pennsylvania Certification #: 68-00547  
Puerto Rico Certification #: FL01264  
South Carolina Certification: #96042001  
Tennessee Certification #: TN02974  
Texas Certification: FL NELAC Reciprocity  
US Virgin Islands Certification: FL NELAC Reciprocity  
Virginia Environmental Certification #: 460165  
West Virginia Certification #: 9962C  
Wisconsin Certification #: 399079670  
Wyoming (EPA Region 8): FL NELAC Reciprocity







# Sample Condition Upon Receipt

**WO#: 70169342**

Client Name: NVAW

Project

PM: JSA

Due Date: 04/29/21

CLIENT: NYAW

Courier:  Fed Ex  UPS  USPS  Client  Commercial  Pace  Other

Tracking #: \_\_\_\_\_

Custody Seal on Cooler/Box Present:  Yes  No Seals intact:  Yes  No

Packing Material:  Bubble Wrap  Bubble Bags  Ziploc  None  Other

Thermometer Used: TH091

Correction Factor: +0.0

Temperature Blank Present:  Yes  No

Type of Ice: Wet  Blue  None

Cooler Temperature(°C): 8.8

Cooler Temperature Corrected(°C): 8.8

Samples on ice, cooling process has begun

Date/Time 5035A kits placed in freezer \_\_\_\_\_

Temp should be above freezing to 6.0°C

USDA Regulated Soil (  N/A, water sample)

Date and Initials of person examining contents: MS 4/15/21

Did samples originate in a quarantine zone within the United States: AL, AR, CA, FL, GA, ID, LA, MS, NC, NM, NY, OK, OR, SC, TN, TX, or VA (check map)?  Yes  No

Did samples originate from a foreign source including Hawaii and Puerto Rico?  Yes  No

If Yes to either question, fill out a Regulated Soil Checklist [F-LI-C-010] and include with SCUR/COC paperwork.

		COMMENTS:
Chain of Custody Present:	<input checked="" type="checkbox"/> Yes <input type="checkbox"/> No	1.
Chain of Custody Filled Out:	<input checked="" type="checkbox"/> Yes <input type="checkbox"/> No	2.
Chain of Custody Relinquished:	<input checked="" type="checkbox"/> Yes <input type="checkbox"/> No	3.
Sampler Name & Signature on COC:	<input checked="" type="checkbox"/> Yes <input type="checkbox"/> No <input type="checkbox"/> N/A	4.
Samples Arrived within Hold Time:	<input checked="" type="checkbox"/> Yes <input type="checkbox"/> No	5.
Short Hold Time Analysis (<72hr):	<input type="checkbox"/> Yes <input checked="" type="checkbox"/> No	6.
Rush Turn Around Time Requested:	<input type="checkbox"/> Yes <input checked="" type="checkbox"/> No	7.
Sufficient Volume: (Triple volume provided for	<input checked="" type="checkbox"/> Yes <input type="checkbox"/> No	8.
Correct Containers Used:	<input checked="" type="checkbox"/> Yes <input type="checkbox"/> No	9.
-Pace Containers Used:	<input checked="" type="checkbox"/> Yes <input type="checkbox"/> No	
Containers Intact:	<input checked="" type="checkbox"/> Yes <input type="checkbox"/> No	10.
Filtered volume received for Dissolved tests	<input type="checkbox"/> Yes <input type="checkbox"/> No <input checked="" type="checkbox"/> N/A	11. Note if sediment is visible in the dissolved container.
Sample Labels match COC:	<input checked="" type="checkbox"/> Yes <input type="checkbox"/> No	12.
-Includes date/time/ID, Matrix: <u>SL WT OIL</u>		
All containers needing preservation have been checked?	<input type="checkbox"/> Yes <input type="checkbox"/> No <input checked="" type="checkbox"/> N/A	13. <input type="checkbox"/> HNO <sub>3</sub> <input type="checkbox"/> H <sub>2</sub> SO <sub>4</sub> <input type="checkbox"/> NaOH <input type="checkbox"/> HCl
pH paper Lot #		Sample #
All containers needing preservation are found to be in compliance with method recommendation? (HNO <sub>3</sub> , H <sub>2</sub> SO <sub>4</sub> , HCl, NaOH>9 Sulfide, NaOH>12 Cyanide)	<input type="checkbox"/> Yes <input type="checkbox"/> No <input checked="" type="checkbox"/> N/A	
Exceptions: VOA, Coliform, TOC/DOC, Oil and Grease, DRO/8015 (water). Per Method, VOA pH is checked after analysis		Initial when completed: _____ Lot # of added preservative: _____ Date/Time preservative added: _____
Samples checked for dechlorination:	<input type="checkbox"/> Yes <input type="checkbox"/> No <input checked="" type="checkbox"/> N/A	14. Positive for Res. Chlorine? Y N
KI starch test strips Lot #		
Residual chlorine strips Lot #		
SM 4500 CN samples checked for sulfide?	<input type="checkbox"/> Yes <input type="checkbox"/> No <input checked="" type="checkbox"/> N/A	15.
Lead Acetate Strips Lot #		
Headspace in VOA Vials (>6mm):	<input type="checkbox"/> Yes <input type="checkbox"/> No <input checked="" type="checkbox"/> N/A	16.
Trip Blank Present:	<input type="checkbox"/> Yes <input type="checkbox"/> No <input checked="" type="checkbox"/> N/A	17.
Trip Blank Custody Seals Present	<input type="checkbox"/> Yes <input type="checkbox"/> No <input checked="" type="checkbox"/> N/A	
Pace Trip Blank Lot # (if applicable): _____		

Client Notification/ Resolution: \_\_\_\_\_

Field Data Required? \_\_\_\_\_

Y / N

Person Contacted: \_\_\_\_\_

Date/Time: \_\_\_\_\_

Comments/ Resolution: \_\_\_\_\_



# Laboratory Results

Results for the samples and analytes requested  
 The lab is not directly responsible for the integrity of the sample before receipt at the lab and is responsible only for the certified tests

### Sample Information:

Type: Drinking Water  
 Origin: Raw Well  
 Routine

**New York American Water - Merrick OPS**  
**60 Brooklyn Avenue**  
**Merrick, NY 11566**

**Lab No. : 70168268001**  
**Client Sample ID.: N-07407**

**Attn To :** Natasha Niola  
 Federal ID : 2902840  
 Collected : 04/07/2021 03:45 PM Point N-07407  
 Received : 04/07/2021 04:30 PM Location Jefferson 11 Well  
 Collected By CLIENT

**Sample Comments:**

Samples were received on the same day of collection on ice and are above 6 degrees Celsius. Samples were placed on ice by the lab and the cooling process has begun.

RUN TO WASTE

Analytical Method:EPA 300.0							
Parameter(s)	Results	Qualifier	D.F.	Units	Limit	Analyzed:	Container:
Chloride	3.8		1	mg/L	250	04/16/2021 7:17 PM	001 BP4U1/1
Analytical Method:EPA 522 Prep Method: EPA 522 Prep Date: 04/14/2021 9:33 AM							
Parameter(s)	Results	Qualifier	D.F.	Units	Limit	Analyzed:	Container:
1,4-Dioxane (p-Dioxane)	0.021		1	ug/L	1	04/15/2021 2:02 AM	001 AG2R1/2
Surr: 1,4-Dioxane-d8 (S)	102%		1	%REC		04/15/2021 2:02 AM	001 AG2R1/2
Analytical Method:EPA 537.1 Prep Method: EPA 537.1 Prep Date: 04/09/2021 4:59 PM							
Parameter(s)	Results	Qualifier	D.F.	Units	Limit	Analyzed:	Container:
Perfluorobutanesulfonic acid	<1.9		1	ng/L		04/11/2021 8:25 AM	001 BP3T1/2
Perfluoroheptanoic acid	<1.9		1	ng/L		04/11/2021 8:25 AM	001 BP3T1/2
Perfluorohexanesulfonic acid	<1.9		1	ng/L		04/11/2021 8:25 AM	001 BP3T1/2
Perfluorononanoic acid	<1.9		1	ng/L		04/11/2021 8:25 AM	001 BP3T1/2
Perfluorooctanesulfonic acid	<1.9		1	ng/L	10	04/11/2021 8:25 AM	001 BP3T1/2
Perfluorooctanoic acid	<1.9		1	ng/L	10	04/11/2021 8:25 AM	001 BP3T1/2
Surr: 13C2-PFDA (S)	119%		1	%REC		04/11/2021 8:25 AM	001 BP3T1/2
Surr: 13C2-PFHxA (S)	106%		1	%REC		04/11/2021 8:25 AM	001 BP3T1/2
Surr: HFPO-DAS (S)	107%		1	%REC		04/11/2021 8:25 AM	001 BP3T1/2
Analytical Method:SM22 9223B Colilert Prep Method: SM22 9223B Colilert Prep Date: 04/07/2021 5:00 PM							
Parameter(s)	Results	Qualifier	D.F.	Units	Limit	Analyzed:	Container:
E.coli	Absent		1		Absent	04/08/2021 11:20	001 SP5T1/2
Total Coliforms	Absent		1		Absent	04/08/2021 11:20	001 SP5T1/2

**Qualifiers:**

DF - Dilution Factor, if reported, represents the factor applied to the reported data due to changes in sample preparation, dilution of the sample aliquot, or moisture content.  
 ND - Not Detected at or above adjusted reporting limit.  
 J - Estimated concentration above the adjusted method detection limit and below the adjusted reporting limit. Estimated value - below calibration range  
 U - Indicates the compound was analyzed for, but not detected

Jennifer Aracri

Test results meet the requirements of NELAC unless otherwise noted.

This report shall not be reproduced except in full, without the written approval of the laboratory.

Result(s) reported meet(s) NYS Regulatory Limit(s).  
 Result(s) flagged with \* Exceed NYS Regulatory Limit(s). Limit Noted.

Date Reported: 04/19/2021

**WorkOrder :**

70168268

## Laboratory Certifications

---

**Pace Analytical Services Ormond Beach**

8 East Tower Circle, Ormond Beach, FL 32174  
Alaska DEC- CS/UST/LUST  
Alabama Certification #: 41320  
Arizona Certification# AZ0819  
Colorado Certification: FL NELAC Reciprocity  
Connecticut Certification #: PH-0216  
Delaware Certification: FL NELAC Reciprocity  
Florida Certification #: E83079  
Georgia Certification #: 955  
Guam Certification: FL NELAC Reciprocity  
Hawaii Certification: FL NELAC Reciprocity  
Illinois Certification #: 200068  
Indiana Certification: FL NELAC Reciprocity  
Kansas Certification #: E-10383  
Kentucky Certification #: 90050  
Louisiana Certification #: FL NELAC Reciprocity  
Louisiana Environmental Certificate #: 05007  
Maryland Certification: #346  
Michigan Certification #: 9911  
Mississippi Certification: FL NELAC Reciprocity  
Missouri Certification #: 236  
Montana Certification #: Cert 0074  
Nebraska Certification: NE-OS-28-14  
New Hampshire Certification #: 2958  
New Jersey Certification #: FL022  
New York Certification #: 11608  
North Carolina Environmental Certificate #: 667  
North Carolina Certification #: 12710  
North Dakota Certification #: R-216  
Ohio DEP 87780  
Oklahoma Certification #: D9947  
Pennsylvania Certification #: 68-00547  
Puerto Rico Certification #: FL01264  
South Carolina Certification: #96042001  
Tennessee Certification #: TN02974  
Texas Certification: FL NELAC Reciprocity  
US Virgin Islands Certification: FL NELAC Reciprocity  
Virginia Environmental Certification #: 460165  
West Virginia Certification #: 9962C  
Wisconsin Certification #: 399079670  
Wyoming (EPA Region 8): FL NELAC Reciprocity

**Pace Analytical Services Long Island**

**WorkOrder :**  
70168268

## Laboratory Certifications

---

**Pace Analytical Services Long Island**

Delaware Certification # NY10478  
Virginia Certification # 460302  
575 Broad Hollow Rd, Melville, NY 11747  
New York Certification #: 10478 Primary Accrediting Body  
New Jersey Certification #: NY158  
Pennsylvania Certification #: 68-00350  
Connecticut Certification #: PH-0435  
Maryland Certification #: 208  
Rhode Island Certification #: LAO00340  
Massachusetts Certification #: M-NY026  
New Hampshire Certification #: 2987











# Sample Request Form PUBLIC WATER SUPPLIER

WELL OFF LINE

WELL RUN TO SYSTEM

YES  NO VOC'S PRESERVED WITH HCl

Date: 4/7/21

Collected By: John Dunn <sup>B</sup>

Accepted By: Maddalena

Cooler Temp: 6.6 °C 417/21 1630

**Client Info:**  
 Name or Code: New York American water  
 Address: 60 Brooklyn Ave  
Manhasset Neck, NY 11566  
 Phone #: 516 233 4325  
 Attn: John Dunn  
 Proj. # or (Name):  
 Bill To: Merrick Ops 2902840  
 Copies To: \_\_\_\_\_

Sample Types	Purpose	Origin	Treatment Types
PW - Potable Water	RO - Routine	D - Distribution	AST - Air Stripper
GW - Groundwater	RE - Resample	RW - Raw Well	GAC - Granular Activated Charcoal
SW - Surface Water	S - Special	TW - Treated Well	N - Nitrate Removal Plant
WW - Waste Water		T - Tank	FE - Iron Removal Plant
AQ - Aqueous		MW - Monitoring Well	O - Other
S - Soil		I - Influent	
		E - Effluent	

**Sample Info:**

Date/Time Collected:	Sample Type	Location	Origin	Treatment Type	Purpose	Field Readings C <sub>2</sub>	pH/Temp	Analysis	Lab No.
4/7 3:55	PW	N-07407 JEFFERSON	RW		RO			2nd quarter PFAS compounds	

Remarks:



Sample Condition Upon Rec

WO#: 70168268

Client Name:

Project

PM: JSA

Due Date: 04/16/21

CLIENT: NYAW

Courier:  Fed Ex  UPS  USPS  Client  Commercial  Pace  Other

Tracking #: \_\_\_\_\_

Custody Seal on Cooler/Box Present:  Yes  No Seals intact:  Yes  No

Packing Material:  Bubble Wrap  Bubble Bags  Ziploc  None  Other

Thermometer Used: TH091 Correction Factor: +0.0

Cooler Temperature(°C): 6.6 Cooler Temperature Corrected(°C): 6.6

Temp should be above freezing to 6.0°C

USDA Regulated Soil {  N/A, water sample}

Date and Initials of person examining contents: MS 4/7/21

Did samples originate in a quarantine zone within the United States: AL, AR, CA, FL, GA, ID, LA, MS, NC, NM, NY, OK, OR, SC, TN, TX, or VA (check map)?  Yes  No

Did samples originate from a foreign source including Hawaii and Puerto Rico)?  Yes  No

If Yes to either question, fill out a Regulated Soil Checklist (F-LI-C-010) and include with SCUR/COC paperwork.

		COMMENTS:
Chain of Custody Present:	<input checked="" type="checkbox"/> Yes <input type="checkbox"/> No	1.
Chain of Custody Filled Out:	<input checked="" type="checkbox"/> Yes <input type="checkbox"/> No	2.
Chain of Custody Relinquished:	<input checked="" type="checkbox"/> Yes <input type="checkbox"/> No	3.
Sampler Name & Signature on COC:	<input checked="" type="checkbox"/> Yes <input type="checkbox"/> No <input type="checkbox"/> N/A	4.
Samples Arrived within Hold Time:	<input checked="" type="checkbox"/> Yes <input type="checkbox"/> No	5.
Short Hold Time Analysis (<72hr):	<input checked="" type="checkbox"/> Yes <input type="checkbox"/> No	6.
Rush Turn Around Time Requested:	<input type="checkbox"/> Yes <input checked="" type="checkbox"/> No	7.
Sufficient Volume: (Triple volume provided for	<input checked="" type="checkbox"/> Yes <input type="checkbox"/> No	8.
Correct Containers Used:	<input checked="" type="checkbox"/> Yes <input type="checkbox"/> No	9.
-Pace Containers Used:	<input checked="" type="checkbox"/> Yes <input type="checkbox"/> No	10.
Containers Intact:	<input checked="" type="checkbox"/> Yes <input type="checkbox"/> No	11.
Filtered volume received for Dissolved tests	<input type="checkbox"/> Yes <input type="checkbox"/> No <input checked="" type="checkbox"/> N/A	Note if sediment is visible in the dissolved container.
Sample Labels match COC:	<input type="checkbox"/> Yes <input type="checkbox"/> No	12.
-Includes date/time/ID, Matrix: SL WT OIL		
All containers needing preservation have been checked?	<input type="checkbox"/> Yes <input type="checkbox"/> No <input checked="" type="checkbox"/> N/A	13.
pH paper Lot #		
All containers needing preservation are found to be in compliance with method recommendation?	<input type="checkbox"/> Yes <input type="checkbox"/> No <input checked="" type="checkbox"/> N/A	Sample #
(HNO <sub>3</sub> , H <sub>2</sub> SO <sub>4</sub> , HCl, NaOH>9 Sulfide, NAOH>12 Cyanide)		
Exceptions: VOA, Coliform, TOC/DOC, Oil and Grease, DRO/8015 (water).		
Per Method, VOA pH is checked after analysis		Initial when completed: Lot # of added preservative: Date/Time preservative added:
Samples checked for dechlorination:	<input type="checkbox"/> Yes <input type="checkbox"/> No <input checked="" type="checkbox"/> N/A	14.
KI starch test strips Lot #		
Residual chlorine strips Lot #		Positive for Res. Chlorine? Y N
SM 4500 CN samples checked for sulfide?	<input type="checkbox"/> Yes <input type="checkbox"/> No <input checked="" type="checkbox"/> N/A	15.
Lead Acetate Strips Lot #		
Headspace in VOA Vials (>6mm):	<input type="checkbox"/> Yes <input type="checkbox"/> No <input checked="" type="checkbox"/> N/A	16.
Trip Blank Present:	<input type="checkbox"/> Yes <input type="checkbox"/> No <input checked="" type="checkbox"/> N/A	17.
Trip Blank Custody Seals Present	<input type="checkbox"/> Yes <input type="checkbox"/> No <input checked="" type="checkbox"/> N/A	
Pace Trip Blank Lot # (if applicable):		

Client Notification/ Resolution:

Field Data Required? Y / N

Person Contacted:

Date/Time:

Comments/ Resolution: